

**BUCHAS, COLUNAS E
PINO DE GUIA**



TECNOSERV

Técnica e Experiência. De Verdade.

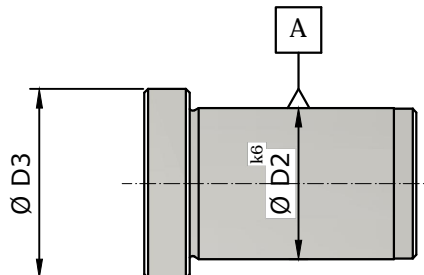
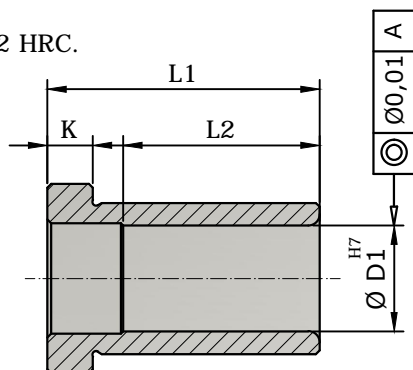
*As especificações presentes neste catálogo poderão ser alteradas a qualquer momento sem prévio aviso.

APLICAÇÃO : Guia de placas em moldes.

MATÉRIA PRIMA: Aço SAE 8620.

TRAT. TÉRMICO: Cementado, temperado e revenido.

DUREZA : 60 +- 2 HRC.



Ø D1	Ø D2	Ø D3	K	L1	L2	CÓDIGO
14	20	25	6	22	22	BC1-1422
				27	27	BC1-1427
				36	30	BC1-1436
				46	30	BC1-1446
				56	30	BC1-1456
				66	30	BC1-1466
15	20	25	6	22	22	BC1-1522
				27	27	BC1-1527
				36	30	BC1-1536
				46	30	BC1-1546
				56	30	BC1-1556
				66	30	BC1-1566
16	22	27	6	27	27	BC1-1627
18	26	31	6	27	27	BC1-1827
				36	36	BC1-1836
				46	40	BC1-1846
				56	40	BC1-1856
				66	40	BC1-1866
				76	40	BC1-1876
20	26	31	6	96	40	BC1-1896
				27	27	BC1-2027
				36	36	BC1-2036
				46	40	BC1-2046
				56	40	BC1-2056
				66	40	BC1-2066
22	30	35	6	76	40	BC1-2076
				96	40	BC1-2096
				27	27	BC1-2227
				36	36	BC1-2236
				46	40	BC1-2246
				56	40	BC1-2256
24	30	35	6	66	40	BC1-2266
				76	40	BC1-2276
				96	40	BC1-2296
				116	40	BC1-22116
				27	27	BC1-2427
				36	36	BC1-2436
24	30	35	6	46	40	BC1-2446
				56	40	BC1-2456
				66	40	BC1-2466
				76	40	BC1-2476
				96	40	BC1-2496
				116	40	BC1-24116

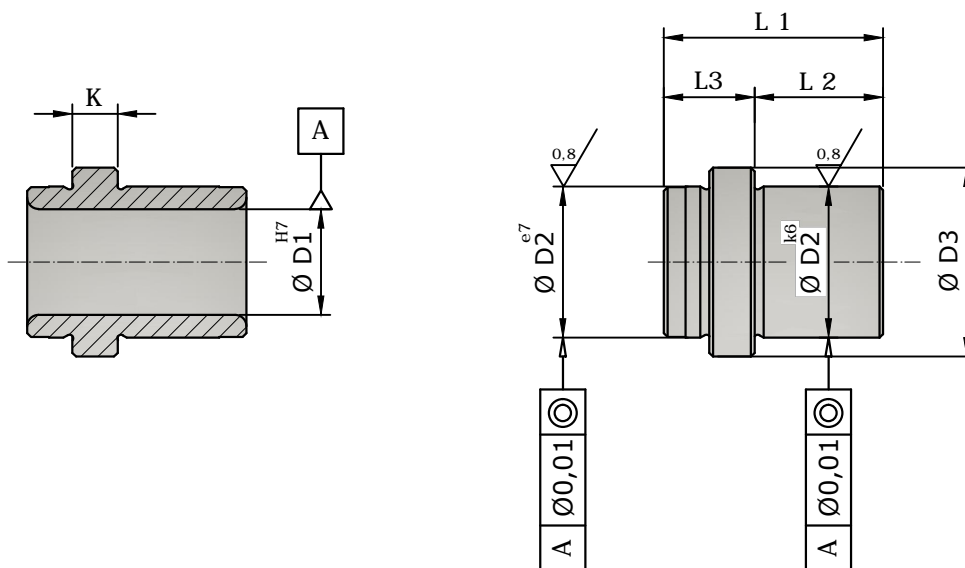
Ø D1	Ø D2	Ø D3	K	L1	L2	CÓDIGO
30	42	47	6	36	36	BC1-3036
				46	46	BC1-3046
				56	56	BC1-3056
				66	66	BC1-3066
				76	76	BC1-3076
				96	75	BC1-3096
32	42	47	6	116	75	BC1-30116
				136	75	BC1-30136
				156	75	BC1-30156
				196	75	BC1-30196
				36	22	BC1-3236
				46	27	BC1-3246
40	54	60	10	56	56	BC1-3256
				66	66	BC1-3266
				76	76	BC1-3276
				96	75	BC1-3296
				116	75	BC1-32116
				136	75	BC1-32136
42	54	60	10	156	75	BC1-32156
				196	75	BC1-32196
				36	36	BC1-4036
				46	46	BC1-4046
				56	56	BC1-4056
				66	66	BC1-4066
42	54	60	10	76	76	BC1-4076
				96	90	BC1-4096
				116	90	BC1-40116
				136	90	BC1-40136
				156	90	BC1-40156
				196	90	BC1-40196
42	54	60	10	36	36	BC1-4236
				46	46	BC1-4246
				56	56	BC1-4256
				66	66	BC1-4266
				76	76	BC1-4276
				96	90	BC1-4296
42	54	60	10	116	90	BC1-42116
				136	90	BC1-42136
				156	90	BC1-42156
				196	90	BC1-42196

APLICAÇÃO : Guia de placas extratoras em moldes.

MATÉRIA PRIMA: Aço SAE 8620.

TRAT. TÉRMICO: Cementado, temperado e revenido.

DUREZA : 60 +- 2 HRC.



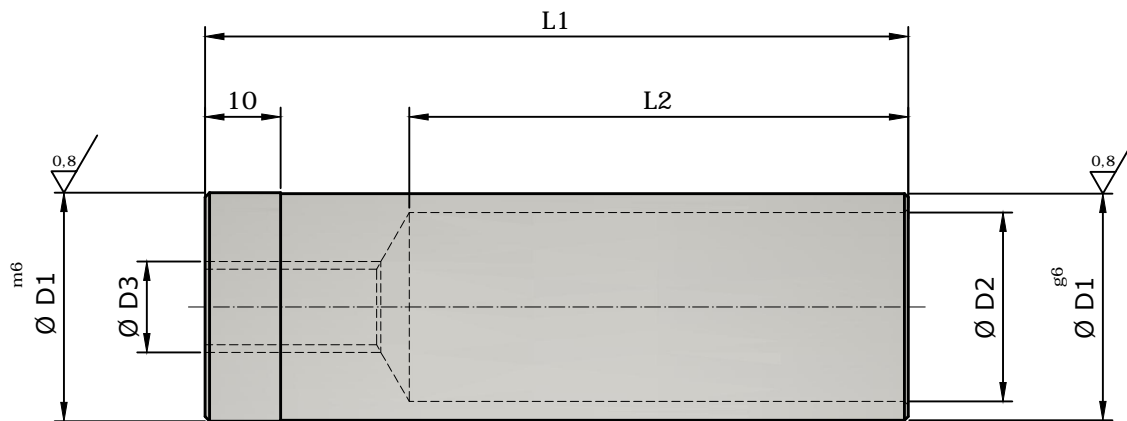
Ø D1	Ø D2	Ø D3	K	L1	L2	L3	CÓDIGO
15	20	25	4	26	17	9	BC2-1526
				29	17	12	BC2-1529
20	26	31	6	29	17	12	BC2-2029
				39	22	17	BC2-2039
24	30	35		39	22	17	BC2-2439
				44	27	17	BC2-2444
				49	27	22	BC2-2449
				63	36	27	BC2-2463
32	42	47		63	36	27	BC2-3263

APLICAÇÃO : Guia de placas em moldes.

MATÉRIA PRIMA: Aço SAE 8620.

TRAT. TÉRMICO: Cementado, temperado e revenido.

DUREZA : 60 +- 2 HRC.



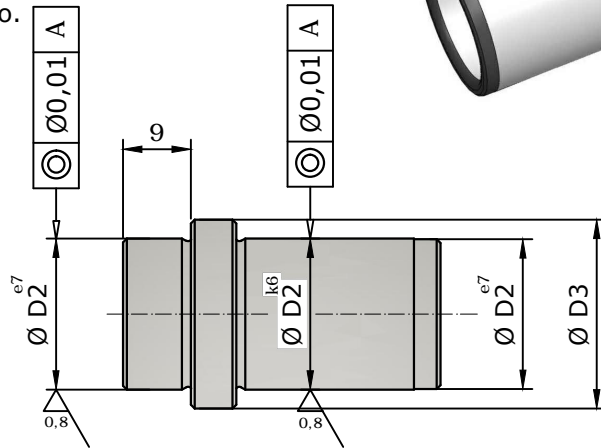
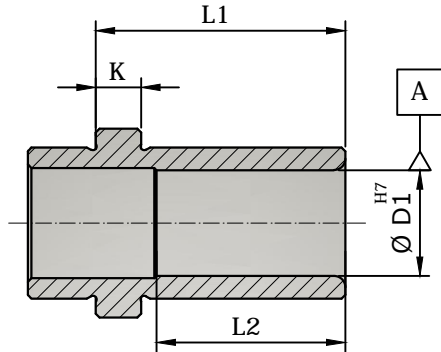
Ø D1	Ø D2	Ø D3	L1	L2	CÓDIGO	Ø D1	Ø D2	Ø D3	L1	L2	CÓDIGO
20	16	M8	50	31	BC4-2050	42	33	M12	50	20	BC4-4250
			78	59	BC4-2078				74	50	BC4-4274
			88	69	BC4-2088				93	66	BC4-4293
			108	89	BC4-20108				122	92	BC4-42122
26	21	M10	50	25	BC4-2650				132	102	BC4-42132
			78	53	BC4-2678				142	112	BC4-42142
			83	58	BC4-2683				152	122	BC4-42152
			88	63	BC4-2688				162	132	BC4-42162
			93	68	BC4-2693				172	142	BC4-42172
			108	83	BC4-26108				182	152	BC4-42182
			113	88	BC4-26113				192	162	BC4-42192
30	25	M12	50	23	BC4-3050				54	43	M12
			74	50	BC4-3074	172	139	BC4-54172			
			93	66	BC4-3093	182	149	BC4-54182			
			102	75	BC4-30102	192	159	BC4-54192			
			113	86	BC4-30113	202	169	BC4-54202			
			122	95	BC4-30122	212	179	BC4-54212			
			133	106	BC4-30133	222	189	BC4-54222			
			142	115	BC4-30142						

APLICAÇÃO : Guia de placas em moldes.

MATÉRIA PRIMA: Aço SAE 8620.

TRAT. TÉRMICO: Cementado, temperado e revenido.

DUREZA : 60 +- 2 HRC.



Ø D1	Ø D2	Ø D3	K	L1	L2	CÓDIGO				
14	20	25	6	22	22	BC5-1422				
				27	27	BC5-1427				
				36	30	BC5-1436				
				46	30	BC5-1446				
				56	30	BC5-1456				
				66	30	BC5-1466				
15	20	25	6	22	22	BC5-1522				
				27	27	BC5-1527				
				36	30	BC5-1536				
				46	30	BC5-1546				
				56	30	BC5-1556				
18	26	31	6	27	27	BC5-1827				
				36	36	BC5-1836				
				46	40	BC5-1846				
				56	40	BC5-1856				
				66	40	BC5-1866				
				76	40	BC5-1876				
				96	40	BC5-1896				
				27	27	BC5-2027				
				36	36	BC5-2036				
				46	40	BC5-2046				
20	26	31	6	56	40	BC5-2056				
				66	40	BC5-2066				
				76	40	BC5-2076				
				96	40	BC5-2096				
				22	30	35	6	27	27	BC5-2227
								36	36	BC5-2236
46	40	BC5-2246								
56	40	BC5-2256								
66	40	BC5-2266								
76	40	BC5-2276								
96	40	BC5-2296								
116	40	BC5-22116								
24	30	35	6					27	27	BC5-2427
								36	36	BC5-2436
				46	40	BC5-2446				
				56	40	BC5-2456				
				66	40	BC5-2466				
				76	40	BC5-2476				
				96	40	BC5-2496				
				116	40	BC5-24116				

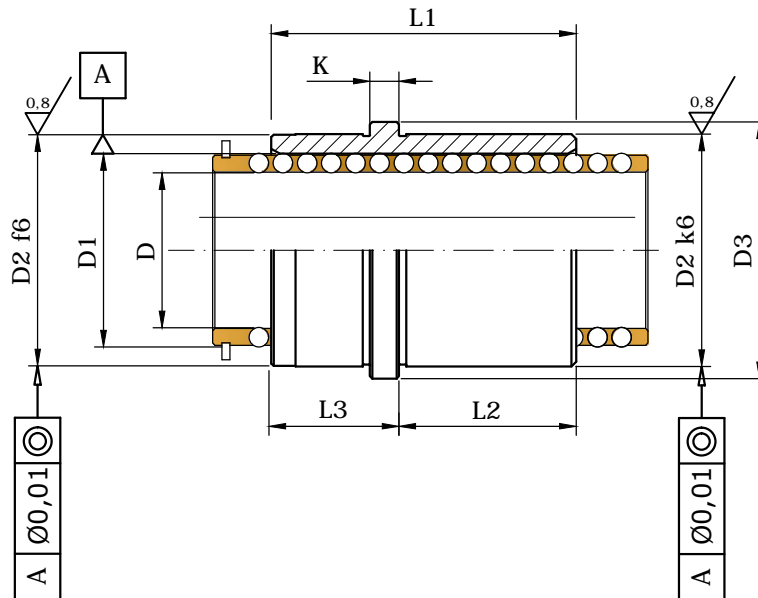
Ø D1	Ø D2	Ø D3	K	L1	L2	CÓDIGO				
30	42	47	6	36	36	BC5-3036				
				46	46	BC5-3046				
				56	56	BC5-3056				
				66	66	BC5-3066				
				76	76	BC5-3076				
				96	75	BC5-3096				
				116	75	BC5-30116				
				136	75	BC5-30136				
				156	75	BC5-30156				
				196	75	BC5-30196				
				32	42	47	6	36	36	BC5-3236
46	46	BC5-3246								
56	56	BC5-3256								
66	66	BC5-3266								
76	76	BC5-3276								
96	75	BC5-3296								
116	75	BC5-32116								
136	75	BC5-32136								
156	75	BC5-32156								
196	75	BC5-32196								
40	54	60	10	56	56	BC5-4056				
				66	66	BC5-4066				
				76	76	BC5-4076				
				96	90	BC5-4096				
				116	90	BC5-40116				
				136	90	BC5-40136				
				156	90	BC5-40156				
				196	90	BC5-40196				
				42	54	60	10	56	56	BC5-4256
								66	66	BC5-4266
76	76	BC5-4276								
96	90	BC5-4296								
116	90	BC5-42116								
136	90	BC5-42136								
156	90	BC5-42156								
196	90	BC5-42196								

APLICAÇÃO : Guia de placas do conjunto extrator em moldes.
com guias de esferas

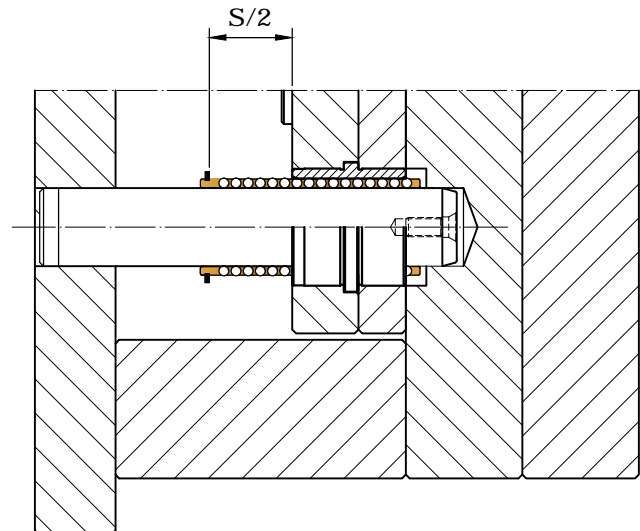
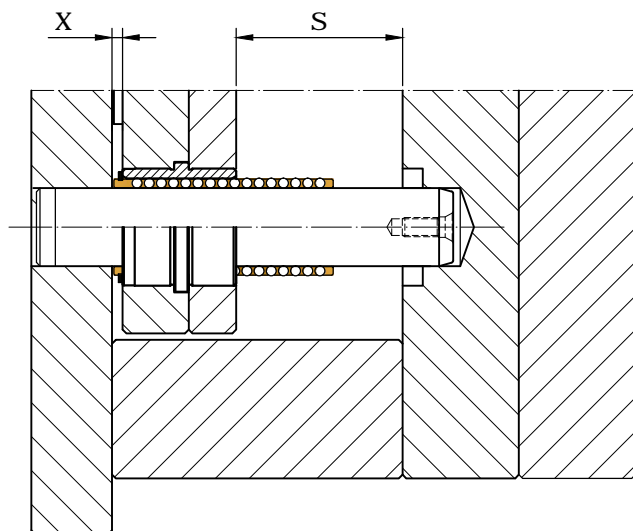
MATÉRIA PRIMA: Aço SAE 52100.

TRAT. TÉRMICO: Temperado e revenido.

DUREZA : 63 +- 2 HRC.



Ø D	Ø D1	Ø D2	Ø D3	K	L1	L2	L3	CÓDIGO
16	22	30	35	4	26	17	9	BC6-1626
					29	17	12	BC6-1629
20	26	32	37	6	29	17	12	BC6-2029
					39	22	17	BC6-2039
24	30	38	43	6	39	22	17	BC6-2439
					44	27	17	BC6-2444
					49	27	22	BC6-2449
					63	36	27	BC6-2463
32	40	48	54	6	63	36	27	BC6-3263
38	46	54	60	6	63	36	27	BC6-3863

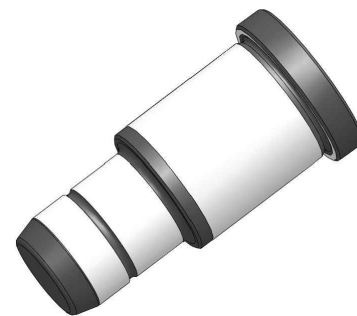
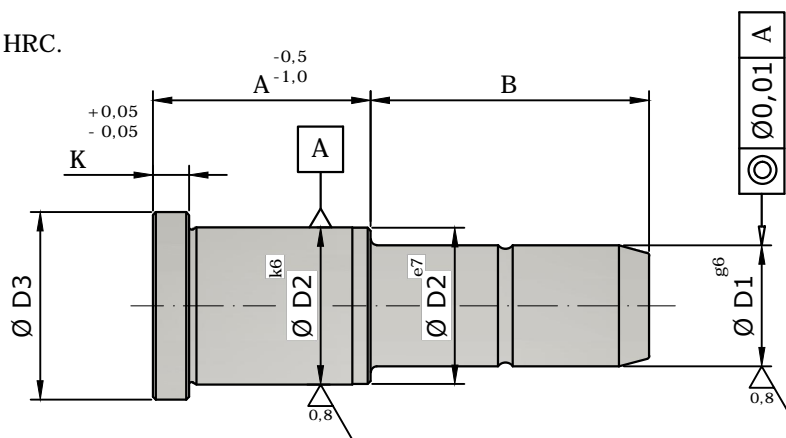


APLICAÇÃO : Guia de placas em moldes.

MATÉRIA PRIMA: Aço SAE 8620.

TRAT. TÉRMICO: Cementado, temperado e revenido.

DUREZA : 60 +- 2 HRC.



Ø D1	Ø D2	Ø D3	K	A	B	CÓDIGO
14	20	25	6	22	21	CL1-1422-21
					35	CL1-1422-35
					55	CL1-1422-55
				27	21	CL1-1427-21
					35	CL1-1427-35
					55	CL1-1427-55
				36	21	CL1-1436-21
					35	CL1-1436-35
					55	CL1-1436-55
				46	21	CL1-1446-21
					35	CL1-1446-35
					55	CL1-1446-55
				56	21	CL1-1456-21
					35	CL1-1456-35
					55	CL1-1456-55
				66	21	CL1-1466-21
					35	CL1-1466-35
					55	CL1-1466-55

Ø D1	Ø D2	Ø D3	K	A	B	CÓDIGO
15	20	25	6	22	21	CL1-1522-21
					35	CL1-1522-35
					55	CL1-1522-55
				27	21	CL1-1527-21
					35	CL1-1527-35
					55	CL1-1527-55
				36	21	CL1-1536-21
					35	CL1-1536-35
					55	CL1-1536-55
				46	21	CL1-1546-21
					35	CL1-1546-35
					55	CL1-1546-55
				56	21	CL1-1556-21
					35	CL1-1556-35
					55	CL1-1556-55
				66	21	CL1-1566-21
					35	CL1-1566-35
					55	CL1-1566-55

COLUNA DE GUIA - Ø 18 / 20

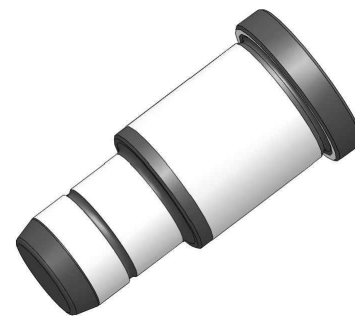
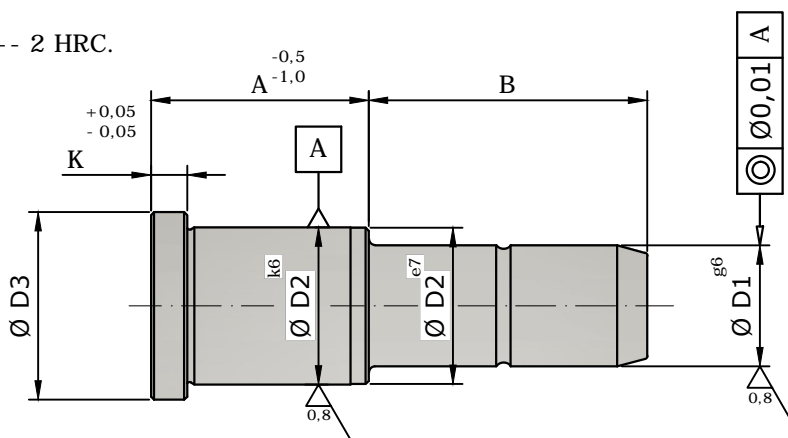
CL1

APLICAÇÃO : Guia de placas em moldes.

MATÉRIA PRIMA: Aço SAE 8620.

TRAT. TÉRMICO: Cementado, temperado e revenido.

DUREZA : 60 +- 2 HRC.



GUIAS

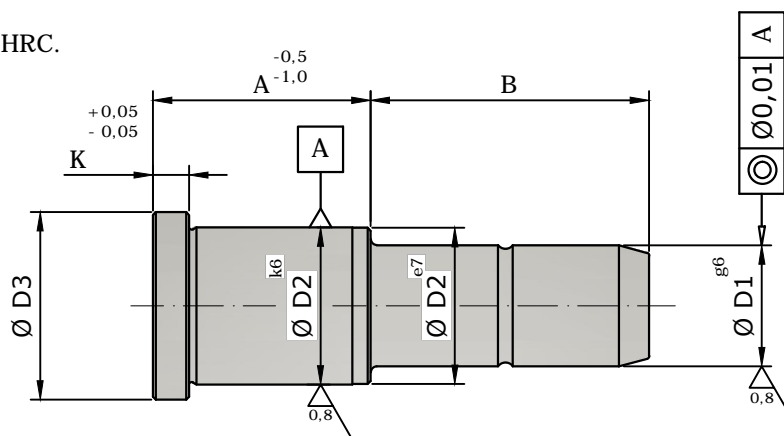
Ø D1	Ø D2	Ø D3	K	A	B	CÓDIGO	Ø D1	Ø D2	Ø D3	K	A	B	CÓDIGO
18	26	31	6	27	26	CL1-1827-26	20	26	31	6	27	26	CL1-2027-26
					45	CL1-1827-45						45	CL1-2027-45
					65	CL1-1827-65						65	CL1-2027-65
					95	CL1-1827-95						95	CL1-2027-95
				36	26	CL1-1836-26	36	26	CL1-2036-26				
					45	CL1-1836-45		45	CL1-2036-45				
					65	CL1-1836-65		65	CL1-2036-65				
					95	CL1-1836-95		95	CL1-2036-95				
				46	26	CL1-1846-26	46	26	CL1-2046-26				
					45	CL1-1846-45		45	CL1-2046-45				
					65	CL1-1846-65		65	CL1-2046-65				
					95	CL1-1846-95		95	CL1-2046-95				
				56	26	CL1-1856-26	56	26	CL1-2056-26				
					45	CL1-1856-45		45	CL1-2056-45				
					65	CL1-1856-65		65	CL1-2056-65				
					95	CL1-1856-95		95	CL1-2056-95				
				66	26	CL1-1866-26	66	26	CL1-2066-26				
					45	CL1-1866-45		45	CL1-2066-45				
					65	CL1-1866-65		65	CL1-2066-65				
					95	CL1-1866-95		95	CL1-2066-95				
76	26	CL1-1876-26	76	26	CL1-2076-26								
	45	CL1-1876-45		45	CL1-2076-45								
	65	CL1-1876-65		65	CL1-2076-65								
	95	CL1-1876-95		95	CL1-2076-95								
96	26	CL1-1896-26	96	26	CL1-2096-26								
	45	CL1-1896-45		45	CL1-2096-45								
	65	CL1-1896-65		65	CL1-2096-65								
	95	CL1-1896-95		95	CL1-2096-95								

APLICAÇÃO : Guia de placas em moldes.

MATÉRIA PRIMA: Aço SAE 8620.

TRAT. TÉRMICO: Cementado, temperado e revenido.

DUREZA : 60 +- 2 HRC.



Ø D1	Ø D2	Ø D3	K	A	B	CÓDIGO	Ø D1	Ø D2	Ø D3	K	A	B	CÓDIGO
22	30	35	6	27	26	CL1-2227-26	24	30	35	6	27	26	CL1-2427-26
					45	CL1-2227-45						45	CL1-2427-45
					65	CL1-2227-65						65	CL1-2427-65
					95	CL1-2227-95						95	CL1-2427-95
					115	CL1-2227-115						115	CL1-2427-115
				36	26	CL1-2236-26					36	26	CL1-2436-26
					45	CL1-2236-45						45	CL1-2436-45
					65	CL1-2236-65						65	CL1-2436-65
					95	CL1-2236-95						95	CL1-2436-95
					115	CL1-2236-115						115	CL1-2436-115
				46	26	CL1-2246-26					46	26	CL1-2446-26
					45	CL1-2246-45						45	CL1-2446-45
					65	CL1-2246-65						65	CL1-2446-65
					95	CL1-2246-95						95	CL1-2446-95
					115	CL1-2246-115						115	CL1-2446-115
				56	26	CL1-2256-26					56	26	CL1-2456-26
					45	CL1-2256-45						45	CL1-2456-45
					65	CL1-2256-65						65	CL1-2456-65
					95	CL1-2256-95						95	CL1-2456-95
					115	CL1-2256-115						115	CL1-2456-115
				66	26	CL1-2266-26					66	26	CL1-2466-26
					45	CL1-2266-45						45	CL1-2466-45
					65	CL1-2266-65						65	CL1-2466-65
					95	CL1-2266-95						95	CL1-2466-95
115	CL1-2266-115	115	CL1-2466-115										
76	26	CL1-2276-26	76	26	CL1-2476-26								
	45	CL1-2276-45		45	CL1-2476-45								
	65	CL1-2276-65		65	CL1-2476-65								
	95	CL1-2276-95		95	CL1-2476-95								
	115	CL1-2276-115		115	CL1-2476-115								
96	26	CL1-2296-26	96	26	CL1-2496-26								
	45	CL1-2296-45		45	CL1-2496-45								
	65	CL1-2296-65		65	CL1-2496-65								
	95	CL1-2296-95		95	CL1-2496-95								
	115	CL1-2296-115		115	CL1-2496-115								
116	26	CL1-22116-26	116	26	CL1-24116-26								
	45	CL1-22116-45		45	CL1-24116-45								
	65	CL1-22116-65		65	CL1-24116-65								
	95	CL1-22116-95		95	CL1-24116-95								
	115	CL1-22116-115		115	CL1-24116-115								

COLUNA DE GUIA - Ø 30 / 32

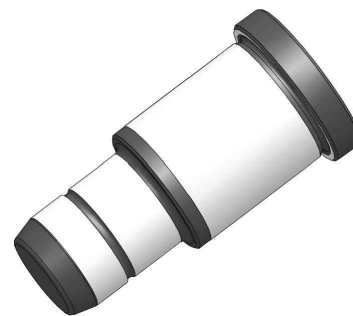
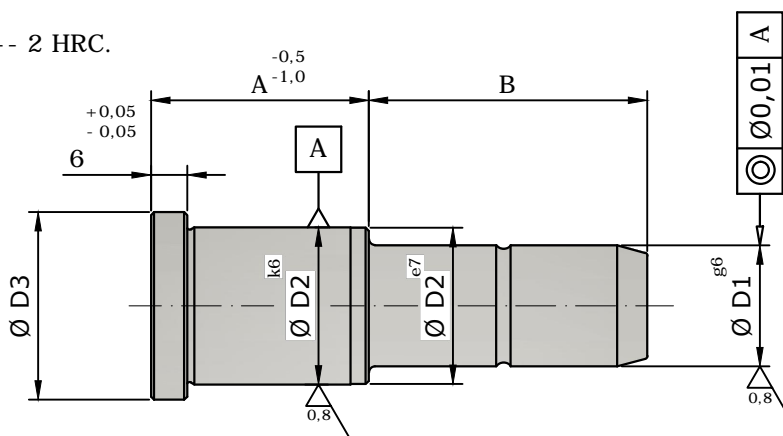
CL1

APLICAÇÃO : Guia de placas em moldes.

MATÉRIA PRIMA: Aço SAE 8620.

TRAT. TÉRMICO: Cementado, temperado e revenido.

DUREZA : 60 +- 2 HRC.



GUIAS

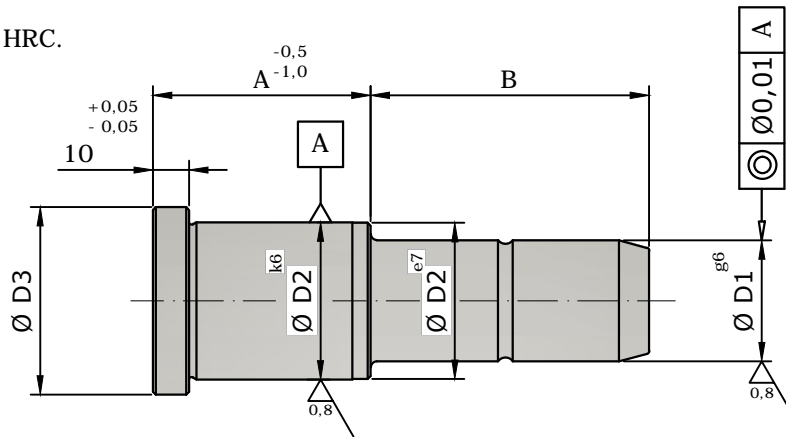
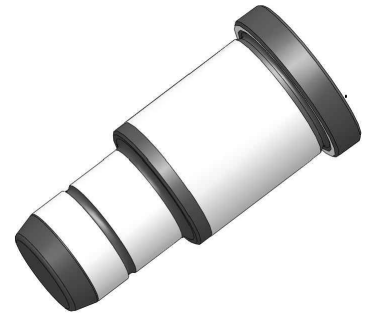
D1	D2	D3	A	B	CÓDIGO	D1	D2	D3	A	B	CÓDIGO	D1	D2	D3	A	B	CÓDIGO																		
30	42	47	36	35	CL1-3036-35	30	42	47	136	35	CL1-30136-35	32	42	47	66	35	CL1-3266-35																		
				55	CL1-3036-55					55	CL1-30136-55					55	CL1-3266-55																		
				75	CL1-3036-75					75	CL1-30136-75					75	CL1-3266-75																		
				115	CL1-3036-115					115	CL1-30136-115					115	CL1-3266-115																		
				46	35					CL1-3046-35	30					42	47	156	155	CL1-30136-155	32	42	47	76	155	CL1-3266-155									
					55					CL1-3046-55									195	CL1-30136-195					195	CL1-3266-195									
					75					CL1-3046-75									35	CL1-30156-35					35	CL1-3276-35									
					115					CL1-3046-115									55	CL1-30156-55					55	CL1-3276-55									
					56					75									CL1-3056-75	30					42	47	196	75	CL1-30156-75	32	42	47	96	75	CL1-3276-75
										115									CL1-3056-115									115	CL1-30156-115					115	CL1-3276-115
				155						CL1-3056-155	155					CL1-30156-155	155	CL1-3276-155																	
				195						CL1-3056-195	195					CL1-30156-195	195	CL1-3276-195																	
			66	35		CL1-3066-35	30	42	47	196	35	CL1-30196-35	32	42	47	116	35	CL1-3296-35																	
				55		CL1-3066-55					55	CL1-30196-55					55	CL1-3296-55																	
				75	CL1-3066-75	75					CL1-30196-75	75					CL1-3296-75																		
				115	CL1-3066-115	115					CL1-30196-115	115					CL1-3296-115																		
				155	CL1-3066-155	155					CL1-30196-155	155					CL1-3296-155																		
				195	CL1-3066-195	195					CL1-30196-195	195					CL1-3296-195																		
			76	35	CL1-3076-35	30	42	47	196	35	CL1-30196-35	32	42	47	136	35	CL1-32116-35																		
				55	CL1-3076-55					55	CL1-30196-55					55	CL1-32116-55																		
				75	CL1-3076-75					75	CL1-30196-75					75	CL1-32116-75																		
				115	CL1-3076-115					115	CL1-30196-115					115	CL1-32116-115																		
				155	CL1-3076-155					155	CL1-30196-155					155	CL1-32116-155																		
				195	CL1-3076-195					195	CL1-30196-195					195	CL1-32116-195																		
				96	35					CL1-3096-35	30					42	47	196	35	CL1-30196-35	32	42	47	196	35	CL1-32116-35									
					55					CL1-3096-55									55	CL1-30196-55					55	CL1-32116-55									
					75					CL1-3096-75									75	CL1-30196-75					75	CL1-32116-75									
					115					CL1-3096-115									115	CL1-30196-115					115	CL1-32116-115									
					155					CL1-3096-155									155	CL1-30196-155					155	CL1-32116-155									
					195					CL1-3096-195									195	CL1-30196-195					195	CL1-32116-195									
			116	35	CL1-30116-35	30	42	47	196	35	CL1-30196-35	32	42	47	156	35	CL1-32136-35																		
				55	CL1-30116-55					55	CL1-30196-55					55	CL1-32136-55																		
				75	CL1-30116-75					75	CL1-30196-75					75	CL1-32136-75																		
				115	CL1-30116-115					115	CL1-30196-115					115	CL1-32136-115																		
				155	CL1-30116-155					155	CL1-30196-155					155	CL1-32136-155																		
				195	CL1-30116-195					195	CL1-30196-195					195	CL1-32136-195																		
136	35	CL1-30136-35		30	42					47	196					35	CL1-30196-35	32	42	47	196	35	CL1-32156-35												
	55	CL1-30136-55														55	CL1-30196-55					55	CL1-32156-55												
	75	CL1-30136-75														75	CL1-30196-75					75	CL1-32156-75												
	115	CL1-30136-115														115	CL1-30196-115					115	CL1-32156-115												
	155	CL1-30136-155														155	CL1-30196-155					155	CL1-32156-155												
	195	CL1-30136-195														195	CL1-30196-195					195	CL1-32156-195												
156	35	CL1-30156-35	30	42	47	196	35	CL1-30196-35	32	42	47	196	35	CL1-32196-35																					
	55	CL1-30156-55					55	CL1-30196-55					55	CL1-32196-55																					
	75	CL1-30156-75					75	CL1-30196-75					75	CL1-32196-75																					
	115	CL1-30156-115					115	CL1-30196-115					115	CL1-32196-115																					
	155	CL1-30156-155					155	CL1-30196-155					155	CL1-32196-155																					
	195	CL1-30156-195					195	CL1-30196-195					195	CL1-32196-195																					

APLICAÇÃO : Guia de placas em moldes.

MATÉRIA PRIMA: Aço SAE 8620.

TRAT. TÉRMICO: Cementado, temperado e revenido.

DUREZA : 60 +- 2 HRC.



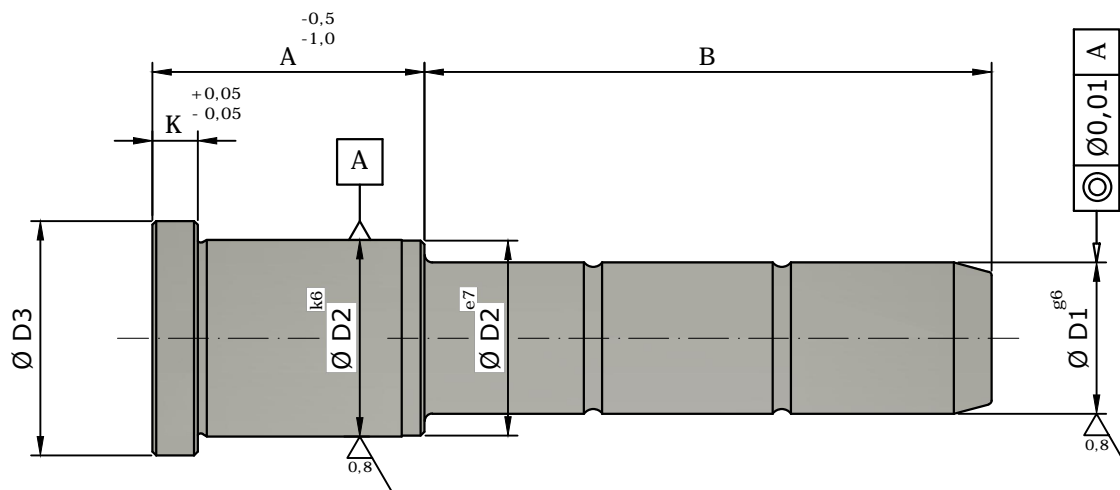
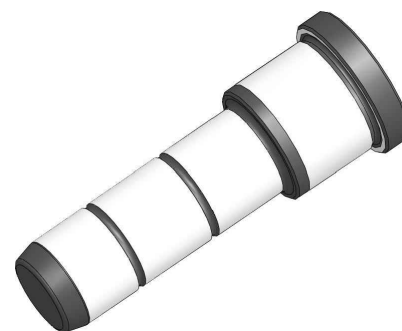
D1	D2	D3	A	B	CÓDIGO	D1	D2	D3	A	B	CÓDIGO	D1	D2	D3	A	B	CÓDIGO
40	54	60	56	35	CL1-4056-35	40	54	60	156	35	CL1-40156-35	42	54	60	76	35	CL1-4276-35
				55	CL1-4056-55					55	CL1-40156-55					55	CL1-4276-55
				75	CL1-4056-75					75	CL1-40156-75					75	CL1-4276-75
				115	CL1-4056-115					115	CL1-40156-115					115	CL1-4276-115
				155	CL1-4056-155					155	CL1-40156-155					155	CL1-4276-155
				195	CL1-4056-195					195	CL1-40156-195					195	CL1-4276-195
			66	35	CL1-4066-35	196	35	CL1-40196-35	96	35	CL1-4296-35						
				55	CL1-4066-55		55	CL1-40196-55		55	CL1-4296-55						
				75	CL1-4066-75		75	CL1-40196-75		75	CL1-4296-75						
				115	CL1-4066-115		115	CL1-40196-115		115	CL1-4296-115						
				155	CL1-4066-155		155	CL1-40196-155		155	CL1-4296-155						
				195	CL1-4066-195		195	CL1-40196-195		195	CL1-4296-195						
			76	35	CL1-4076-35	196	35	CL1-4076-35	116	35	CL1-42116-35						
				55	CL1-4076-55		55	CL1-4076-55		55	CL1-42116-55						
				75	CL1-4076-75		75	CL1-4076-75		75	CL1-42116-75						
				115	CL1-4076-115		115	CL1-4076-115		115	CL1-42116-115						
				155	CL1-4076-155		155	CL1-4076-155		155	CL1-42116-155						
				195	CL1-4076-195		195	CL1-4076-195		195	CL1-42116-195						
			96	35	CL1-4096-35	196	35	CL1-4096-35	136	35	CL1-42136-35						
				55	CL1-4096-55		55	CL1-4096-55		55	CL1-42136-55						
				75	CL1-4096-75		75	CL1-4096-75		75	CL1-42136-75						
				115	CL1-4096-115		115	CL1-4096-115		115	CL1-42136-115						
				155	CL1-4096-155		155	CL1-4096-155		155	CL1-42136-155						
				195	CL1-4096-195		195	CL1-4096-195		195	CL1-42136-195						
116	35	CL1-40116-35	196	35	CL1-40116-35	156	35	CL1-42156-35									
	55	CL1-40116-55		55	CL1-40116-55		55	CL1-42156-55									
	75	CL1-40116-75		75	CL1-40116-75		75	CL1-42156-75									
	115	CL1-40116-115		115	CL1-40116-115		115	CL1-42156-115									
	155	CL1-40116-155		155	CL1-40116-155		155	CL1-42156-155									
	195	CL1-40116-195		195	CL1-40116-195		195	CL1-42156-195									
136	35	CL1-40136-35	196	35	CL1-40136-35	196	35	CL1-42196-35									
	55	CL1-40136-55		55	CL1-40136-55		55	CL1-42196-55									
	75	CL1-40136-75		75	CL1-40136-75		75	CL1-42196-75									
	115	CL1-40136-115		115	CL1-40136-115		115	CL1-42196-115									
	155	CL1-40136-155		155	CL1-40136-155		155	CL1-42196-155									
	195	CL1-40136-195		195	CL1-40136-195		195	CL1-42196-195									

APLICAÇÃO : Guia de placas do conjunto extrator em moldes.

MATÉRIA PRIMA: Aço SAE 8620.

TRAT. TÉRMICO: Cementado, temperado e revenido.

DUREZA : 60 +- 2 HRC.



Ø D1	Ø D2	Ø D3	K	A	B	CÓDIGO
15	20	25	6	22	45	CL2-1522-45
					55	CL2-1522-55
					75	CL2-1522-75
				27	45	CL2-1527-45
					55	CL2-1527-55
					75	CL2-1527-75
				36	45	CL2-1536-45
					55	CL2-1536-55
					75	CL2-1536-75
20	26	31	6	27	55	CL2-2027-55
					75	CL2-2027-75
					95	CL2-2027-95
				36	55	CL2-2036-55
					75	CL2-2036-75
					95	CL2-2036-95
				46	55	CL2-2046-55
					75	CL2-2046-75
					95	CL2-2046-95

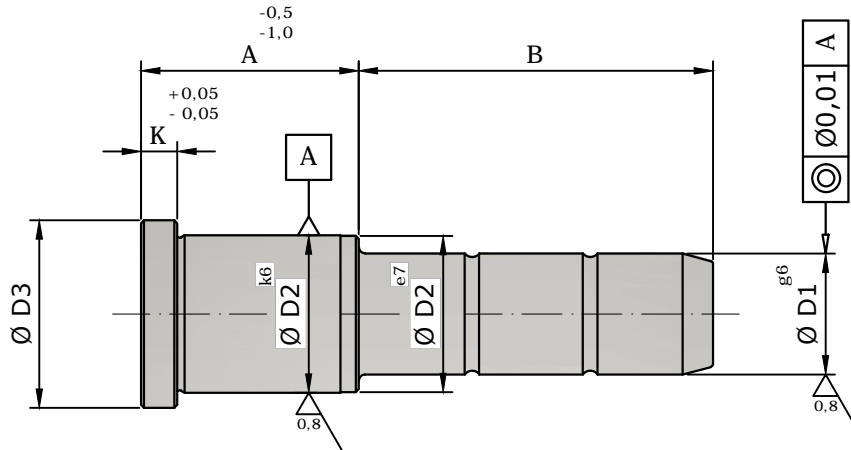
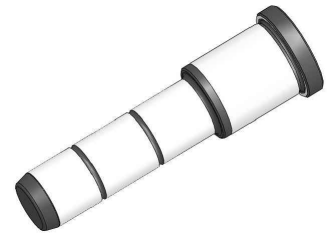
Ø D1	Ø D2	Ø D3	K	A	B	CÓDIGO
24	30	35	6	36	75	CL2-2436-75
					85	CL2-2436-85
					95	CL2-2436-95
					115	CL2-2436-115
					135	CL2-2436-135
					75	CL2-2446-75
				46	85	CL2-2446-85
					95	CL2-2446-95
					115	CL2-2446-115
					135	CL2-2446-135
					95	CL2-2456-95
					115	CL2-2456-115
32	42	47	6	56	135	CL2-2456-135
					155	CL2-2456-155
					95	CL2-2476-95
				76	115	CL2-2476-115
					135	CL2-2476-135
					115	CL2-3246-115
56	76	155	6	46	135	CL2-3246-135
					155	CL2-3246-155
					115	CL2-3256-115
				76	135	CL2-3256-135
					155	CL2-3256-155
					115	CL2-3276-115
76	155	155	6	76	135	CL2-3276-135
					155	CL2-3276-155
					155	CL2-3276-155

APLICAÇÃO : Guia de placas em moldes.

MATÉRIA PRIMA: Aço SAE 8620.

TRAT. TÉRMICO: Cementado, temperado e revenido.

DUREZA : 60 +- 2 HRC.



Ø D1	Ø D2	Ø D3	K	A	B	CÓDIGO	Ø D1	Ø D2	Ø D3	K	A	B	CÓDIGO
14	20	25	6	27	65	CL3-1427-65	15	20	25	6	27	65	CL3-1527-65
					75	CL3-1427-75						75	CL3-1527-75
					84	CL3-1427-84						84	CL3-1527-84
					95	CL3-1427-95						95	CL3-1527-95
					102	CL3-1427-102						102	CL3-1527-102
				36	65	CL3-1436-65					36	65	CL3-1536-65
					75	CL3-1436-75						75	CL3-1536-75
					84	CL3-1436-84						84	CL3-1536-84
					95	CL3-1436-95						95	CL3-1536-95
					102	CL3-1436-102						102	CL3-1536-102
				46	65	CL3-1446-65					46	65	CL3-1546-65
					75	CL3-1446-75						75	CL3-1546-75
					84	CL3-1446-84						84	CL3-1546-84
					102	CL3-1446-102						102	CL3-1546-102
					122	CL3-1446-122						122	CL3-1546-122
				56	75	CL3-1456-75					56	75	CL3-1556-75
					84	CL3-1456-84						84	CL3-1556-84
					102	CL3-1456-102						102	CL3-1556-102
					122	CL3-1456-122						122	CL3-1556-122
				66	84	CL3-1466-84					66	84	CL3-1566-84
95	CL3-1466-95	95	CL3-1566-95										
102	CL3-1466-102	102	CL3-1566-102										
122	CL3-1466-122	122	CL3-1566-122										
				140	CL3-1466-140					140	CL3-1566-140		

COLUNA DE GUIA - Ø 18 /20 (FLUTUANTE)

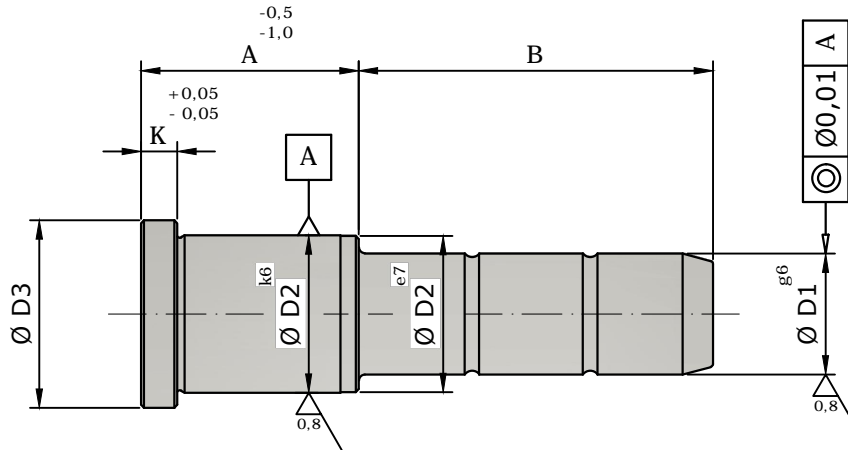
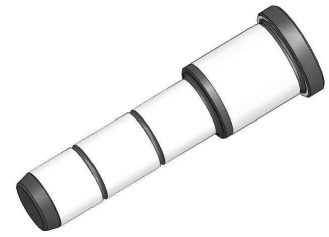
CL3

APLICAÇÃO : Guia de placas em moldes.

MATÉRIA PRIMA: Aço SAE 8620.

TRAT. TÉRMICO: Cementado, temperado e revenido.

DUREZA : 60 +- 2 HRC.



GUIAS

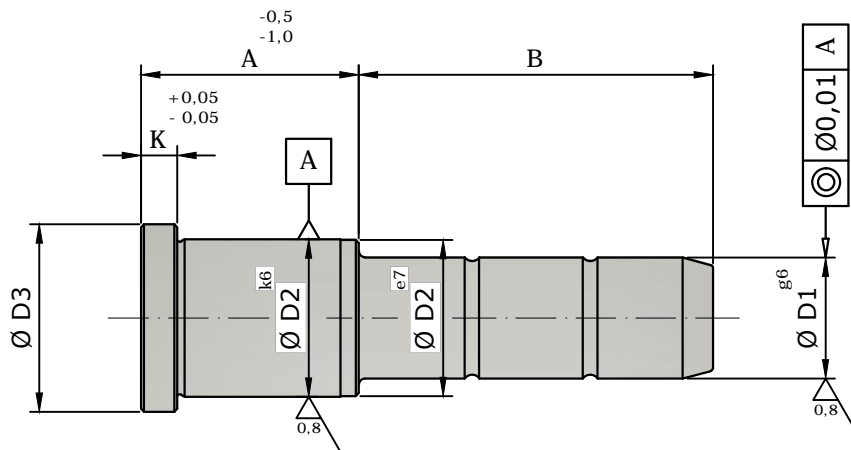
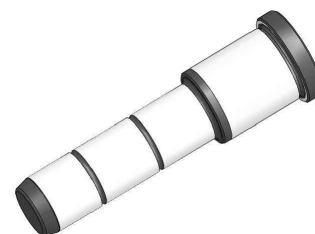
Ø D1	Ø D2	Ø D3	K	A	B	CÓDIGO	Ø D1	Ø D2	Ø D3	K	A	B	CÓDIGO
18	26	31	6	36	65	CL3-1836-65	20	26	31	6	36	65	CL3-2036-65
					84	CL3-1836-84						84	CL3-2036-84
					102	CL3-1836-102						102	CL3-2036-102
					122	CL3-1836-122						122	CL3-2036-122
					140	CL3-1836-140						140	CL3-2036-140
				46	65	CL3-1846-65					46	65	CL3-2046-65
					84	CL3-1846-84						84	CL3-2046-84
					102	CL3-1846-102						102	CL3-2046-102
					122	CL3-1846-122						122	CL3-2046-122
					140	CL3-1846-140						140	CL3-2046-140
				56	84	CL3-1856-84					56	84	CL3-2056-84
					102	CL3-1856-102						102	CL3-2056-102
					122	CL3-1856-122						122	CL3-2056-122
					140	CL3-1856-140						140	CL3-2056-140
					155	CL3-1856-155						155	CL3-2056-155
				66	168	CL3-1856-168					66	168	CL3-2056-168
					84	CL3-1866-84						84	CL3-2066-84
					102	CL3-1866-102						102	CL3-2066-102
					122	CL3-1866-122						122	CL3-2066-122
					140	CL3-1866-140						140	CL3-2066-140
				76	155	CL3-1866-155					76	155	CL3-2066-155
					168	CL3-1866-168						168	CL3-2066-168
					102	CL3-1876-102						102	CL3-2076-102
					122	CL3-1876-122						122	CL3-2076-122
140	CL3-1876-140	140	CL3-2076-140										
96	155	CL3-1876-155	96	155	CL3-2076-155								
	168	CL3-1876-168		168	CL3-2076-168								
	182	CL3-1876-182		182	CL3-2076-182								
	102	CL3-1896-102		102	CL3-2096-102								
	122	CL3-1896-122		122	CL3-2096-122								
				140	CL3-1896-140	140	CL3-2096-140						
				155	CL3-1896-155	155	CL3-2096-155						
				168	CL3-1896-168	168	CL3-2096-168						
				182	CL3-1896-182	182	CL3-2096-182						
				198	CL3-1896-198	198	CL3-2096-198						

APLICAÇÃO : Guia de placas em moldes.

MATÉRIA PRIMA: Aço SAE 8620.

TRAT. TÉRMICO: Cementado, temperado e revenido.

DUREZA : 60 +- 2 HRC.



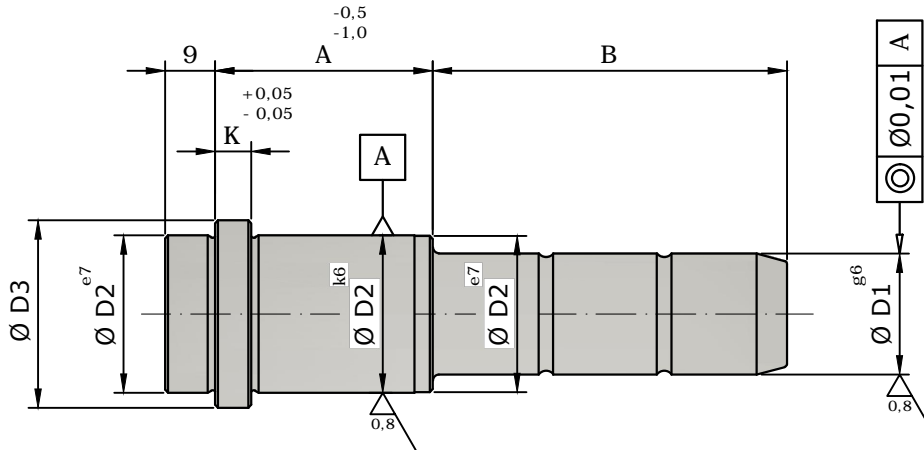
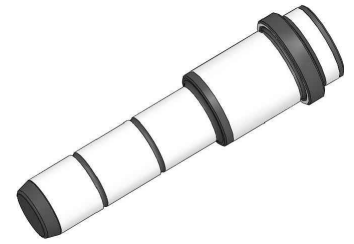
Ø D1	Ø D2	Ø D3	K	A	B	CÓDIGO	Ø D1	Ø D2	Ø D3	K	A	B	CÓDIGO	
22	30	35	6	36	65	CL3-2236-65	24	30	35	6	36	65	CL3-2436-65	
					84	CL3-2236-84						84	CL3-2436-84	
					102	CL3-2236-102						102	CL3-2436-102	
					122	CL3-2236-122						122	CL3-2436-122	
					140	CL3-2236-140						140	CL3-2436-140	
				46	65	CL3-2246-65					46	65	CL3-2446-65	
					84	CL3-2246-84						84	CL3-2446-84	
					102	CL3-2246-102						102	CL3-2446-102	
					122	CL3-2246-122						122	CL3-2446-122	
					140	CL3-2246-140						140	CL3-2446-140	
				56	155	CL3-2246-155					56	155	CL3-2446-155	
					168	CL3-2246-168						168	CL3-2446-168	
					84	CL3-2256-84						56	84	CL3-2456-84
					102	CL3-2256-102							102	CL3-2456-102
					122	CL3-2256-122							122	CL3-2456-122
				140	CL3-2256-140	140					CL3-2456-140			
				155	CL3-2256-155	155					CL3-2456-155			
				66	168	CL3-2256-168					66	168	CL3-2456-168	
					84	CL3-2266-84						66	84	CL3-2466-84
					102	CL3-2266-102							102	CL3-2466-102
					122	CL3-2266-122							122	CL3-2466-122
					140	CL3-2266-140							140	CL3-2466-140
				155	CL3-2266-155	155					CL3-2466-155			
				76	168	CL3-2266-168					76	168	CL3-2466-168	
					102	CL3-2276-102						76	102	CL3-2476-102
					122	CL3-2276-122							122	CL3-2476-122
					140	CL3-2276-140							140	CL3-2476-140
					155	CL3-2276-155							155	CL3-2476-155
				168	CL3-2276-168	168					CL3-2476-168			
				96	182	CL3-2276-182					96	182	CL3-2476-182	
					102	CL3-2296-102						96	102	CL3-2496-102
					122	CL3-2296-122							122	CL3-2496-122
					140	CL3-2296-140							140	CL3-2496-140
					155	CL3-2296-155							155	CL3-2496-155
				168	CL3-2296-168	168					CL3-2496-168			
												198	CL3-2296-198	

APLICAÇÃO : Guia de placas em moldes.

MATÉRIA PRIMA: Aço SAE 8620.

TRAT. TÉRMICO: Cementado, temperado e revenido.

DUREZA : 60 +- 2 HRC.



Ø D1	Ø D2	Ø D3	K	A	B	CÓDIGO	Ø D1	Ø D2	Ø D3	K	A	B	CÓDIGO
14	20	25	6	27	65	CL4-1427-65	15	20	25	6	27	65	CL4-1527-65
					75	CL4-1427-75						75	CL4-1527-75
					84	CL4-1427-84						84	CL4-1527-84
					95	CL4-1427-95						95	CL4-1527-95
					102	CL4-1427-102						102	CL4-1527-102
				36	65	CL4-1436-65					36	65	CL4-1536-65
					75	CL4-1436-75						75	CL4-1536-75
					84	CL4-1436-84						84	CL4-1536-84
					95	CL4-1436-95						95	CL4-1536-95
					102	CL4-1436-102						102	CL4-1536-102
				46	65	CL4-1446-65					46	65	CL4-1546-65
					75	CL4-1446-75						75	CL4-1546-75
					84	CL4-1446-84						84	CL4-1546-84
					102	CL4-1446-102						102	CL4-1546-102
					122	CL4-1446-122						122	CL4-1546-122
				56	75	CL4-1456-75					56	75	CL4-1556-75
					84	CL4-1456-84						84	CL4-1556-84
					102	CL4-1456-102						102	CL4-1556-102
					122	CL4-1456-122						122	CL4-1556-122
				66	84	CL4-1466-84					66	84	CL4-1566-84
95	CL4-1466-95	95	CL4-1566-95										
102	CL4-1466-102	102	CL4-1566-102										
122	CL4-1466-122	122	CL4-1566-122										
				140	CL4-1466-140					140	CL4-1566-140		

COLUNA DE GUIA - Ø 18 /20 (FLUTUANTE)

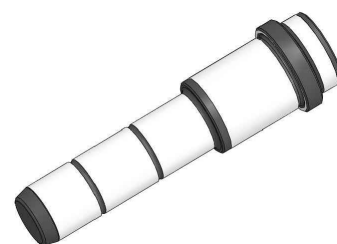
CL4

APLICAÇÃO : Guia de placas em moldes.

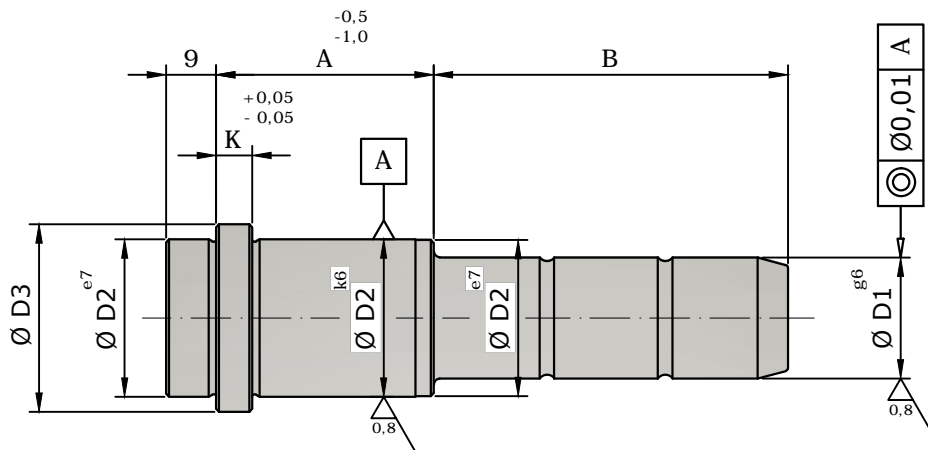
MATÉRIA PRIMA: Aço SAE 8620.

TRAT. TÉRMICO: Cementado, temperado e revenido.

DUREZA : 60 +- 2 HRC.



GUIAS



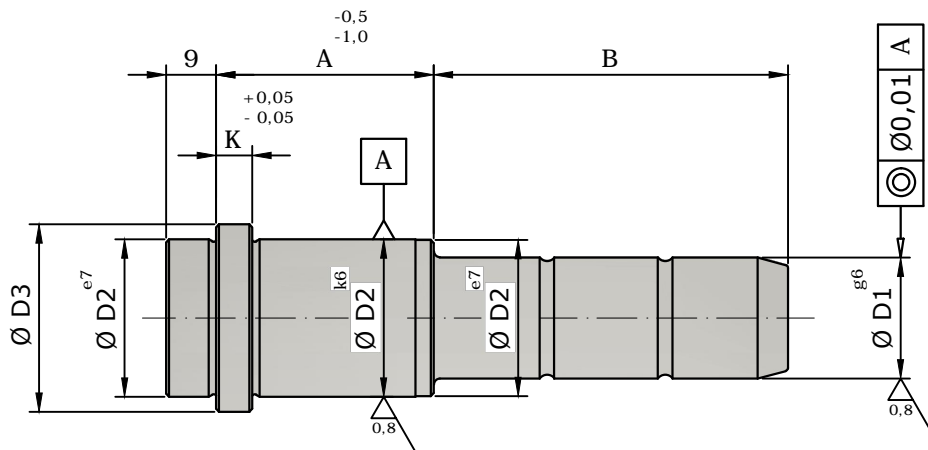
Ø D1	Ø D2	Ø D3	K	A	B	CÓDIGO	Ø D1	Ø D2	Ø D3	K	A	B	CÓDIGO
18	26	31	6	36	65	CL4-1836-65	20	26	31	6	36	65	CL4-2036-65
					84	CL4-1836-84						84	CL4-2036-84
					102	CL4-1836-102						102	CL4-2036-102
					122	CL4-1836-122						122	CL4-2036-122
					140	CL4-1836-140						140	CL4-2036-140
				46	65	CL4-1846-65					46	65	CL4-2046-65
					84	CL4-1846-84						84	CL4-2046-84
					102	CL4-1846-102						102	CL4-2046-102
					122	CL4-1846-122						122	CL4-2046-122
					140	CL4-1846-140						140	CL4-2046-140
				56	84	CL4-1856-84					56	84	CL4-2056-84
					102	CL4-1856-102						102	CL4-2056-102
					122	CL4-1856-122						122	CL4-2056-122
					140	CL4-1856-140						140	CL4-2056-140
					155	CL4-1856-155						155	CL4-2056-155
				66	168	CL4-1856-168					66	168	CL4-2056-168
					84	CL4-1866-84						84	CL4-2066-84
					102	CL4-1866-102						102	CL4-2066-102
					122	CL4-1866-122						122	CL4-2066-122
					140	CL4-1866-140						140	CL4-2066-140
				76	155	CL4-1866-155					76	155	CL4-2066-155
					168	CL4-1866-168						168	CL4-2066-168
					102	CL4-1876-102						102	CL4-2076-102
					122	CL4-1876-122						122	CL4-2076-122
140	CL4-1876-140	140	CL4-2076-140										
96	155	CL4-1876-155	96	155	CL4-2076-155								
	168	CL4-1876-168		168	CL4-2076-168								
	182	CL4-1876-182		182	CL4-2076-182								
	102	CL4-1896-102		102	CL4-2096-102								
	122	CL4-1896-122		122	CL4-2096-122								
	140	CL4-1896-140	140	CL4-2096-140									
	155	CL4-1896-155	155	CL4-2096-155									
	168	CL4-1896-168	168	CL4-2096-168									
	182	CL4-1896-182	182	CL4-2096-182									
	198	CL4-1896-198	198	CL4-2096-198									

APLICAÇÃO : Guia de placas em moldes.

MATÉRIA PRIMA: Aço SAE 8620.

TRAT. TÉRMICO: Cementado, temperado e revenido.

DUREZA : 60 +- 2 HRC.



Ø D1	Ø D2	Ø D3	K	A	B	CÓDIGO	Ø D1	Ø D2	Ø D3	K	A	B	CÓDIGO	
22	30	35	6	36	65	CL4-2236-65	24	30	35	6	36	65	CL4-2436-65	
					84	CL4-2236-84						84	CL4-2436-84	
					102	CL4-2236-102						102	CL4-2436-102	
					122	CL4-2236-122						122	CL4-2436-122	
					140	CL4-2236-140						140	CL4-2436-140	
				46	65	CL4-2246-65					46	65	CL4-2446-65	
					84	CL4-2246-84						84	CL4-2446-84	
					102	CL4-2246-102						102	CL4-2446-102	
					122	CL4-2246-122						122	CL4-2446-122	
					140	CL4-2246-140						140	CL4-2446-140	
				56	155	CL4-2246-155					56	155	CL4-2446-155	
					168	CL4-2246-168						168	CL4-2446-168	
					84	CL4-2256-84						56	84	CL4-2456-84
					102	CL4-2256-102							102	CL4-2456-102
					122	CL4-2256-122							122	CL4-2456-122
				140	CL4-2256-140	140					CL4-2456-140			
				155	CL4-2256-155	155					CL4-2456-155			
				66	168	CL4-2256-168					66	168	CL4-2456-168	
					84	CL4-2266-84						66	84	CL4-2466-84
					102	CL4-2266-102							102	CL4-2466-102
					122	CL4-2266-122							122	CL4-2466-122
					140	CL4-2266-140							140	CL4-2466-140
				155	CL4-2266-155	155					CL4-2466-155			
				76	168	CL4-2266-168					76	168	CL4-2466-168	
					102	CL4-2276-102						76	102	CL4-2476-102
					122	CL4-2276-122							122	CL4-2476-122
					140	CL4-2276-140							140	CL4-2476-140
					155	CL4-2276-155							155	CL4-2476-155
				168	CL4-2276-168	168					CL4-2476-168			
				96	182	CL4-2276-182					96	182	CL4-2476-182	
102	CL4-2296-102	96	102		CL4-2496-102									
122	CL4-2296-122		122		CL4-2496-122									
140	CL4-2296-140		140		CL4-2496-140									
155	CL4-2296-155		155		CL4-2496-155									
168	CL4-2296-168		168	CL4-2496-168										
				198	CL4-2296-198						198	CL4-2496-198		

COLUNA DE GUIA - Ø 30 / 32 (FLUTUANTE)

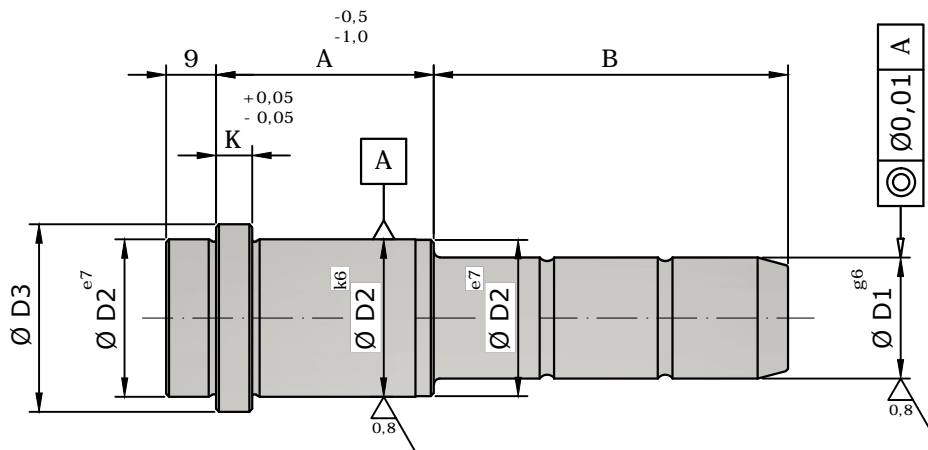
CL4

APLICAÇÃO : Guia de placas em moldes.

MATÉRIA PRIMA: Aço SAE 8620.

TRAT. TÉRMICO: Cementado, temperado e revenido.

DUREZA : 60 +- 2 HRC.



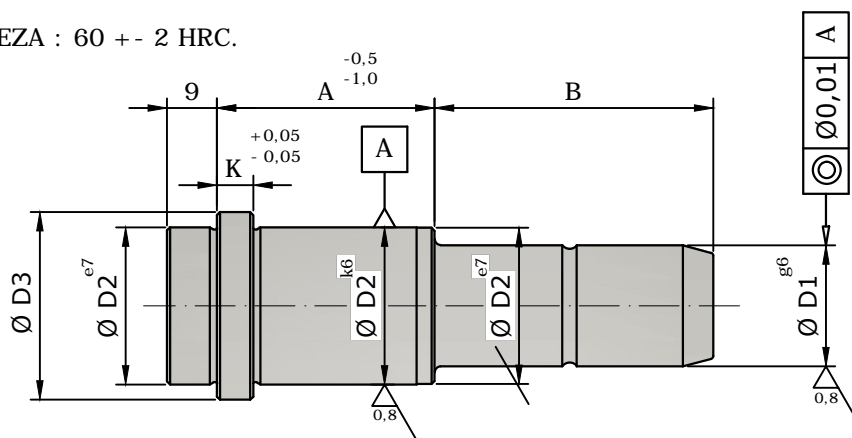
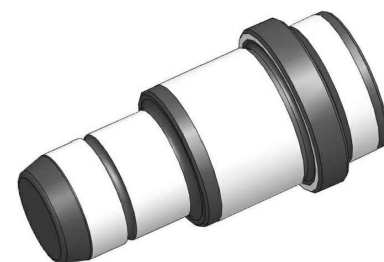
Ø D1	Ø D2	Ø D3	K	A	B	CÓDIGO	Ø D1	Ø D2	Ø D3	K	A	B	CÓDIGO		
30	42	47	6	46	84	CL4-3046-84	32	42	47	6	46	84	CL4-3246-84		
					102	CL4-3046-102						102	CL4-3246-102		
					122	CL4-3046-122						122	CL4-3246-122		
					140	CL4-3046-140						140	CL4-3246-140		
					168	CL4-3046-168						168	CL4-3246-168		
					198	CL4-3046-198						198	CL4-3246-198		
				56	102	CL4-3056-102					56	102	CL4-3256-102		
					122	CL4-3056-122						122	CL4-3256-122		
					140	CL4-3056-140						140	CL4-3256-140		
					168	CL4-3056-168						168	CL4-3256-168		
					198	CL4-3056-198						198	CL4-3256-198		
				66	102	CL4-3066-102					66	102	CL4-3266-102		
					122	CL4-3066-122						122	CL4-3266-122		
					140	CL4-3066-140						140	CL4-3266-140		
					168	CL4-3066-168						168	CL4-3266-168		
					198	CL4-3066-198						198	CL4-3266-198		
				225	225	CL4-3066-225					225	225	CL4-3266-225		
					76	122						CL4-3076-122	76	122	CL4-3276-122
						140						CL4-3076-140		140	CL4-3276-140
						168						CL4-3076-168		168	CL4-3276-168
				198		CL4-3076-198					198	CL4-3276-198			
				225	225	CL4-3076-225					225	225	CL4-3276-225		
					96	122						CL4-3096-122	96	122	CL4-3296-122
						140						CL4-3096-140		140	CL4-3296-140
						168						CL4-3096-168		168	CL4-3296-168
				198		CL4-3096-198					198	CL4-3296-198			
				225	225	CL4-3096-225					225	225	CL4-3296-225		
					116	140						CL4-30116-140	116	140	CL4-32116-140
						168						CL4-30116-168		168	CL4-32116-168
						198						CL4-30116-198		198	CL4-32116-198
225	CL4-30116-225	225	CL4-32116-225												
245	245	CL4-30116-245	245	245	CL4-32116-245										
	136	168		CL4-30136-168	136	168	CL4-32136-168								
		198		CL4-30136-198		198	CL4-32136-198								
225		CL4-30136-225	225	CL4-32136-225											
262	262	CL4-30136-262	262	262	CL4-32136-262										

APLICAÇÃO : Guia de placas em moldes.

MATÉRIA PRIMA : Aço SAE 8620.

TRAT. TERMICO: Cementado, temperado e revenido.

DUREZA : 60 +- 2 HRC.



Ø D1	Ø D2	Ø D3	K	A	B	CÓDIGO
14	20	25	6	22	21	CL5-1422-21
					35	CL5-1422-35
					55	CL5-1422-55
				27	21	CL5-1427-21
					35	CL5-1427-35
					55	CL5-1427-55
				36	21	CL5-1436-21
					35	CL5-1436-35
					55	CL5-1436-55
				46	21	CL5-1446-21
					35	CL5-1446-35
					55	CL5-1446-55
				56	21	CL5-1456-21
					35	CL5-1456-35
					55	CL5-1456-55
				66	21	CL5-1466-21
					35	CL5-1466-35
					55	CL5-1466-55

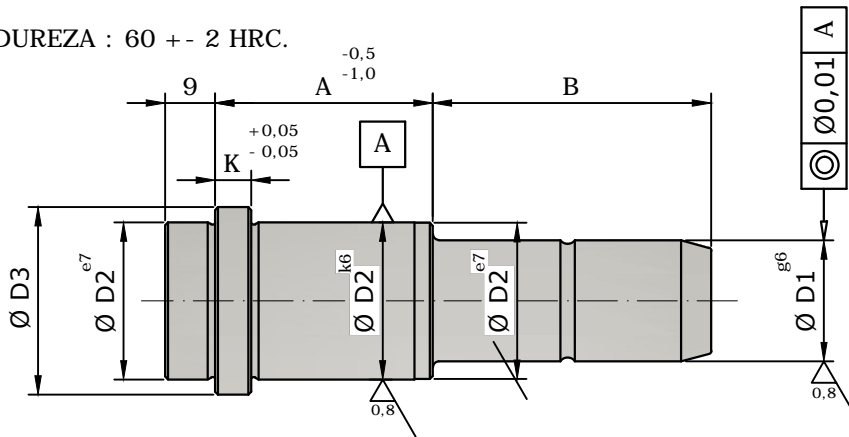
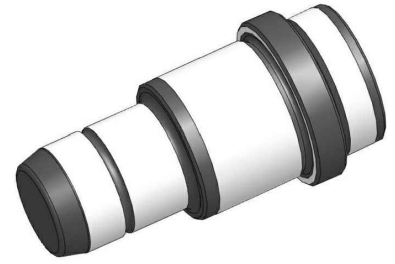
Ø D1	Ø D2	Ø D3	K	A	B	CÓDIGO
15	20	25	6	22	21	CL5-1522-21
					35	CL5-1522-35
					55	CL5-1522-55
				27	21	CL5-1527-21
					35	CL5-1527-35
					55	CL5-1527-55
				36	21	CL5-1536-21
					35	CL5-1536-35
					55	CL5-1536-55
				46	21	CL5-1546-21
					35	CL5-1546-35
					55	CL5-1546-55
				56	21	CL5-1556-21
					35	CL5-1556-35
					55	CL5-1556-55
				66	21	CL5-1566-21
					35	CL5-1566-35
					55	CL5-1566-55

APLICAÇÃO : Guia de placas em moldes.

MATÉRIA PRIMA: Aço SAE 8620.

TRAT. TÉRMICO: Cementado, temperado e revenido.

DUREZA : 60 +- 2 HRC.



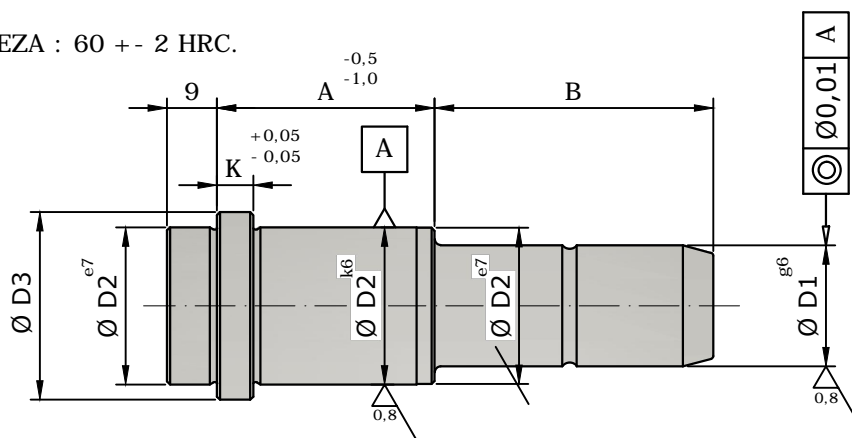
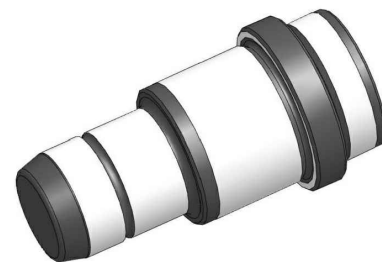
Ø D1	Ø D2	Ø D3	K	A	B	CÓDIGO	Ø D1	Ø D2	Ø D3	K	A	B	CÓDIGO
18	26	31	6	27	26	CL5-1827-26	20	26	31	6	27	26	CL5-2027-26
					45	CL5-1827-45						45	CL5-2027-45
					65	CL5-1827-65						65	CL5-2027-65
					95	CL5-1827-95						95	CL5-2027-95
				36	26	CL5-1836-26					36	26	CL5-2036-26
					45	CL5-1836-45						45	CL5-2036-45
					65	CL5-1836-65						65	CL5-2036-65
					95	CL5-1836-95						95	CL5-2036-95
				46	26	CL5-1846-26					46	26	CL5-2046-26
					45	CL5-1846-45						45	CL5-2046-45
					65	CL5-1846-65						65	CL5-2046-65
					95	CL5-1846-95						95	CL5-2046-95
				56	26	CL5-1856-26					56	26	CL5-2056-26
					45	CL5-1856-45						45	CL5-2056-45
					65	CL5-1856-65						65	CL5-2056-65
					95	CL5-1856-95						95	CL5-2056-95
				66	26	CL5-1866-26					66	26	CL5-2066-26
					45	CL5-1866-45						45	CL5-2066-45
					65	CL5-1866-65						65	CL5-2066-65
					95	CL5-1866-95						95	CL5-2066-95
76	26	CL5-1876-26	76	26	CL5-2076-26								
	45	CL5-1876-45		45	CL5-2076-45								
	65	CL5-1876-65		65	CL5-2076-65								
	95	CL5-1876-95		95	CL5-2076-95								
96	26	CL5-1896-26	96	26	CL5-2096-26								
	45	CL5-1896-45		45	CL5-2096-45								
	65	CL5-1896-65		65	CL5-2096-65								
	95	CL5-1896-95		95	CL5-2096-95								

APLICAÇÃO : Guia de placas em moldes.

MATÉRIA PRIMA: Aço SAE 8620.

TRAT. TÉRMICO: Cementado, temperado e revenido.

DUREZA : 60 +- 2 HRC.



Ø D1	Ø D2	Ø D3	K	A	B	CÓDIGO	Ø D1	Ø D2	Ø D3	K	A	B	CÓDIGO
22	30	35	6	27	26	CL5-2227-26	24	30	35	6	27	26	CL5-2427-26
					45	CL5-2227-45						45	CL5-2427-45
					65	CL5-2227-65						65	CL5-2427-65
					95	CL5-2227-95						95	CL5-2427-95
					115	CL5-2227-115						115	CL5-2427-115
				36	26	CL5-2236-26					36	26	CL5-2436-26
					45	CL5-2236-45						45	CL5-2436-45
					65	CL5-2236-65						65	CL5-2436-65
					95	CL5-2236-95						95	CL5-2436-95
					115	CL5-2236-115						115	CL5-2436-115
				46	26	CL5-2246-26					46	26	CL5-2446-26
					45	CL5-2246-45						45	CL5-2446-45
					65	CL5-2246-65						65	CL5-2446-65
					95	CL5-2246-95						95	CL5-2446-95
					115	CL5-2246-115						115	CL5-2446-115
				56	26	CL5-2256-26					56	26	CL5-2456-26
					45	CL5-2256-45						45	CL5-2456-45
					65	CL5-2256-65						65	CL5-2456-65
					95	CL5-2256-95						95	CL5-2456-95
					115	CL5-2256-115						115	CL5-2456-115
				66	26	CL5-2266-26					66	26	CL5-2466-26
					45	CL5-2266-45						45	CL5-2466-45
					65	CL5-2266-65						65	CL5-2466-65
					95	CL5-2266-95						95	CL5-2466-95
115	CL5-2266-115	115	CL5-2466-115										
76	26	CL5-2276-26	76	26	CL5-2476-26								
	45	CL5-2276-45		45	CL5-2476-45								
	65	CL5-2276-65		65	CL5-2476-65								
	95	CL5-2276-95		95	CL5-2476-95								
	115	CL5-2276-115		115	CL5-2476-115								
96	26	CL5-2296-26	96	26	CL5-2496-26								
	45	CL5-2296-45		45	CL5-2496-45								
	65	CL5-2296-65		65	CL5-2496-65								
	95	CL5-2296-95		95	CL5-2496-95								
	115	CL5-2296-115		115	CL5-2496-115								
116	26	CL5-22116-26	116	26	CL5-24116-26								
	45	CL5-22116-45		45	CL5-24116-45								
	65	CL5-22116-65		65	CL5-24116-65								
	95	CL5-22116-95		95	CL5-24116-95								
	115	CL5-22116-115		115	CL5-24116-115								

COLUNA DE GUIA - Ø 30 / 32

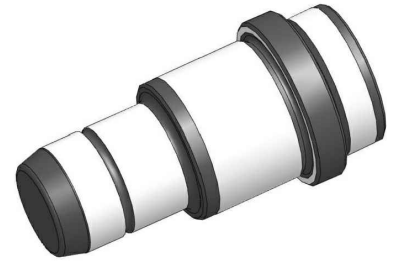
CL5

APLICAÇÃO : Guia de placas em moldes.

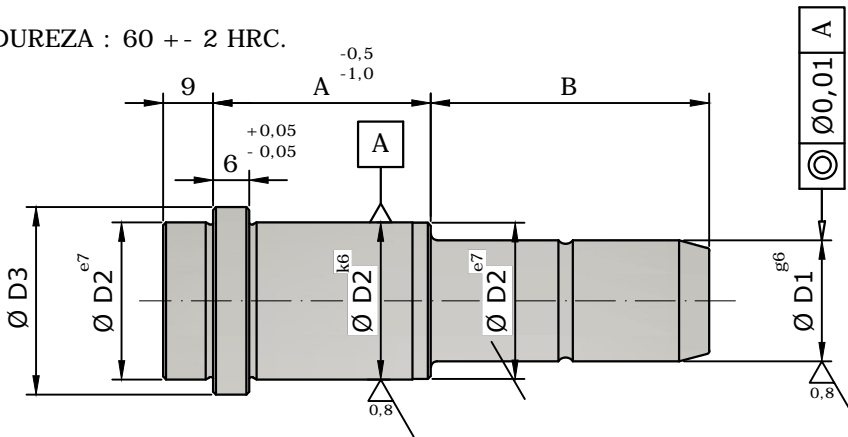
MATÉRIA PRIMA: Aço SAE 8620.

TRAT. TÉRMICO: Cementado, temperado e revenido.

DUREZA : 60 +- 2 HRC.



GUIAS



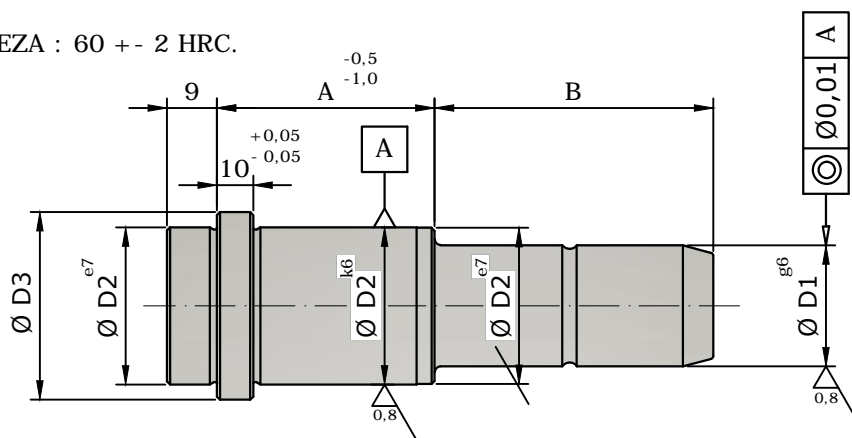
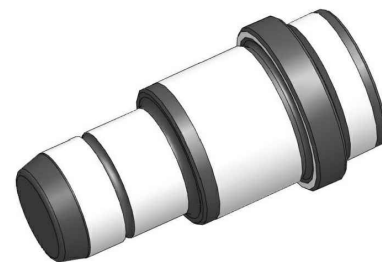
D1	D2	D3	A	B	CÓDIGO	D1	D2	D3	A	B	CÓDIGO	D1	D2	D3	A	B	CÓDIGO		
30	42	47	36	35	CL5-3036-35	30	42	47	136	35	CL5-30136-35	32	42	47	66	35	CL5-3266-35		
				55	CL5-3036-55					55	CL5-30136-55					55	CL5-3266-55		
				75	CL5-3036-75					75	CL5-30136-75					75	CL5-3266-75		
				115	CL5-3036-115					115	CL5-30136-115					115	CL5-3266-115		
			46	35	CL5-3046-35				156	155	CL5-30136-155				96	35	CL5-3276-35		
				55	CL5-3046-55					195	CL5-30136-195					55	CL5-3276-55		
				75	CL5-3046-75					35	CL5-30156-35					75	CL5-3276-75		
			56	35	CL5-3056-35				196	55	CL5-30156-55				116	55	CL5-3276-55		
				55	CL5-3056-55					75	CL5-30156-75					75	CL5-3276-75		
				75	CL5-3056-75					115	CL5-30156-115					115	CL5-3276-115		
				115	CL5-3056-115					155	CL5-30156-155					155	CL5-3276-155		
			66	195	CL5-3056-195				196	195	CL5-30156-195				196	195	CL5-3276-195		
				35	CL5-3066-35					35	CL5-30196-35					35	CL5-3296-35		
				55	CL5-3066-55					55	CL5-30196-55					55	CL5-3296-55		
				75	CL5-3066-75					75	CL5-30196-75					75	CL5-3296-75		
				115	CL5-3066-115					115	CL5-30196-115					115	CL5-3296-115		
			76	155	CL5-3066-155				196	155	CL5-30196-155				196	155	CL5-3296-155		
				195	CL5-3066-195					195	CL5-30196-195					195	CL5-3296-195		
				35	CL5-3076-35					36	35					CL5-3236-35	136	35	CL5-32136-35
				55	CL5-3076-55						55					CL5-3236-55		55	CL5-32136-55
				75	CL5-3076-75						75					CL5-3236-75		75	CL5-32136-75
			115	CL5-3076-115	115				CL5-3236-115		115				CL5-32136-115				
			155	CL5-3076-155	155				CL5-3236-155		155				CL5-32136-155				
			96	195	CL5-3076-195				46	195	CL5-3076-195				156	195	CL5-32136-195		
35	CL5-3096-35	35		CL5-3246-35	35	CL5-32156-35													
55	CL5-3096-55	55		CL5-3246-55	55	CL5-32156-55													
75	CL5-3096-75	75		CL5-3246-75	75	CL5-32156-75													
115	CL5-3096-115	115		CL5-3246-115	115	CL5-32156-115													
116	155	CL5-3096-155	56	155	CL5-3096-155	196	155	CL5-32156-155											
	195	CL5-3096-195		195	CL5-3096-195		195	CL5-32156-195											
	35	CL5-30116-35		35	CL5-3256-35		35	CL5-32196-35											
	55	CL5-30116-55		55	CL5-3256-55		55	CL5-32196-55											
	75	CL5-30116-75		75	CL5-3256-75		75	CL5-32196-75											
195	115	CL5-30116-115	56	115	CL5-3256-115	196	115	CL5-32196-115											
	155	CL5-30116-155		155	CL5-3256-155		155	CL5-32196-155											
	195	CL5-30116-195		195	CL5-3256-195		195	CL5-32196-195											

APLICAÇÃO : Guia de placas em moldes.

MATÉRIA PRIMA: Aço SAE 8620.

TRAT. TÉRMICO: Cementado, temperado e revenido.

DUREZA : 60 +- 2 HRC.



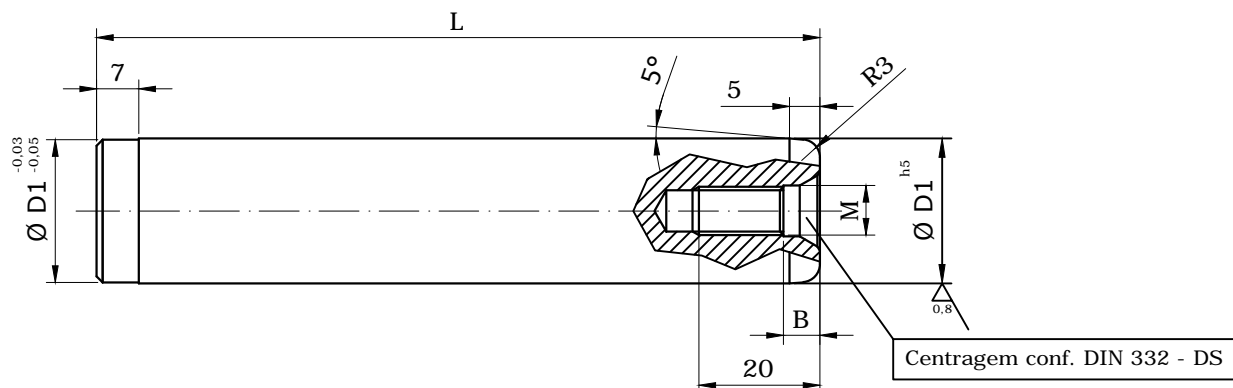
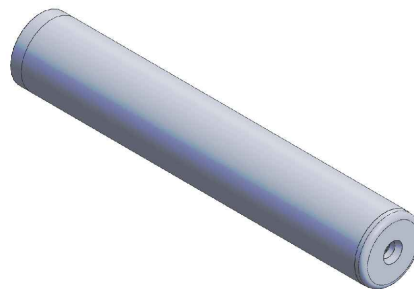
D1	D2	D3	A	B	CÓDIGO	D1	D2	D3	A	B	CÓDIGO	D1	D2	D3	A	B	CÓDIGO
40	54	60	56	35	CL5-4056-35	40	54	60	156	35	CL5-40156-35	42	54	60	76	35	CL5-4276-35
				55	CL5-4056-55					55	CL5-40156-55					55	CL5-4276-55
				75	CL5-4056-75					75	CL5-40156-75					75	CL5-4276-75
				115	CL5-4056-115					115	CL5-40156-115					115	CL5-4276-115
				155	CL5-4056-155					155	CL5-40156-155					155	CL5-4276-155
				195	CL5-4056-195					195	CL5-40156-195					195	CL5-4276-195
			66	35	CL5-4066-35	40	54	60	196	35	CL5-40196-35	42	54	60	96	35	CL5-4296-35
				55	CL5-4066-55					55	CL5-40196-55					55	CL5-4296-55
				75	CL5-4066-75					75	CL5-40196-75					75	CL5-4296-75
				115	CL5-4066-115					115	CL5-40196-115					115	CL5-4296-115
				155	CL5-4066-155					155	CL5-40196-155					155	CL5-4296-155
				195	CL5-4066-195					195	CL5-40196-195					195	CL5-4296-195
			76	35	CL5-4076-35	40	54	60	116	35	CL5-4076-35	42	54	60	116	35	CL5-42116-35
				55	CL5-4076-55					55	CL5-4076-55					55	CL5-42116-55
				75	CL5-4076-75					75	CL5-4076-75					75	CL5-42116-75
				115	CL5-4076-115					115	CL5-4076-115					115	CL5-42116-115
				155	CL5-4076-155					155	CL5-4076-155					155	CL5-42116-155
				195	CL5-4076-195					195	CL5-4076-195					195	CL5-42116-195
			96	35	CL5-4096-35	40	54	60	136	35	CL5-4096-35	42	54	60	136	35	CL5-42136-35
				55	CL5-4096-55					55	CL5-4096-55					55	CL5-42136-55
				75	CL5-4096-75					75	CL5-4096-75					75	CL5-42136-75
				115	CL5-4096-115					115	CL5-4096-115					115	CL5-42136-115
				155	CL5-4096-155					155	CL5-4096-155					155	CL5-42136-155
				195	CL5-4096-195					195	CL5-4096-195					195	CL5-42136-195
116	35	CL5-40116-35	42	54	60	156	35	CL5-40116-35	42	54	60	156	35	CL5-42156-35			
	55	CL5-40116-55					55	CL5-40116-55					55	CL5-42156-55			
	75	CL5-40116-75					75	CL5-40116-75					75	CL5-42156-75			
	115	CL5-40116-115					115	CL5-40116-115					115	CL5-42156-115			
	155	CL5-40116-155					155	CL5-40116-155					155	CL5-42156-155			
	195	CL5-40116-195					195	CL5-40116-195					195	CL5-42156-195			
136	35	CL5-40136-35	42	54	60	196	35	CL5-40136-35	42	54	60	196	35	CL5-42196-35			
	55	CL5-40136-55					55	CL5-40136-55					55	CL5-42196-55			
	75	CL5-40136-75					75	CL5-40136-75					75	CL5-42196-75			
	115	CL5-40136-115					115	CL5-40136-115					115	CL5-42196-115			
	155	CL5-40136-155					155	CL5-40136-155					155	CL5-42196-155			
	195	CL5-40136-195					195	CL5-40136-195					195	CL5-42196-195			

APLICAÇÃO : Guia de placas do conjunto extrator em moldes com guias de esferas.

MATÉRIA PRIMA: Aço SAE 8620.

TRAT. TÉRMICO: Cementado, temperado e revenido.

DUREZA : 60 +- 2 HRC.



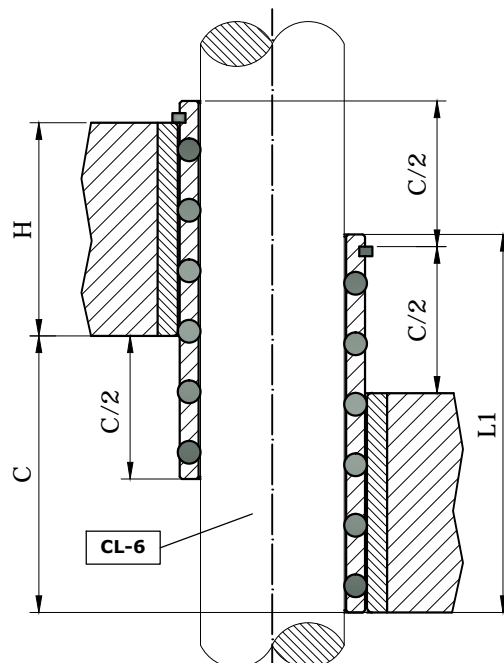
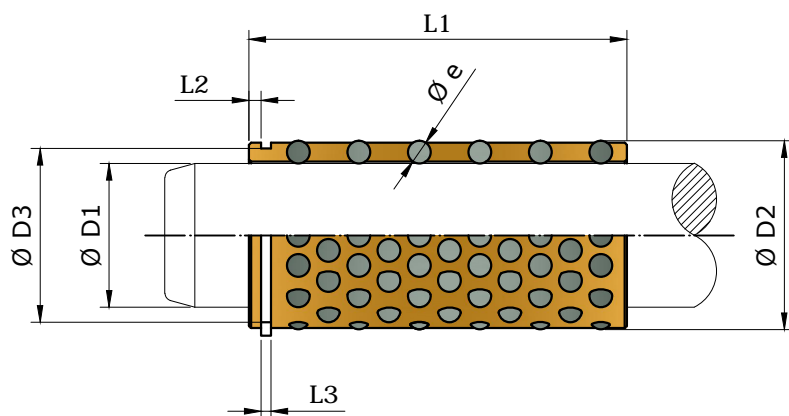
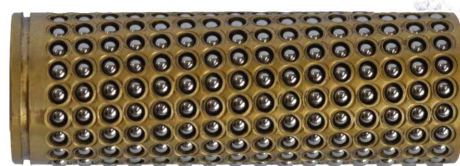
Ø D1	L	M	B	CÓDIGO
12	90	X	X	CL6-12090
	100			CL6-12100
	110			CL6-12110
	120			CL6-12120
	130			CL6-12130
	140			CL6-12140
	150			CL6-12150
16	90	X	X	CL6-16090
	100			CL6-16100
	110			CL6-16110
	120			CL6-16120
	130			CL6-16130
	140			CL6-16140
18	150	M6	6	CL6-16150
	100			CL6-18100
	110			CL6-18110
	120			CL6-18120
	130			CL6-18130
	140			CL6-18140
	150			CL6-18150
	160			CL6-18160
20	170	M6	6	CL6-18170
	180			CL6-18180
	100			CL6-20100
	110			CL6-20110
	120			CL6-20120
	130			CL6-20130
	140			CL6-20140
	150			CL6-20150
20	160	M6	6	CL6-20160
	170			CL6-20170
	180			CL6-20180

Ø D1	L	M	B	CÓDIGO
24	120	M8	6	CL6-24120
	130			CL6-24130
	140			CL6-24140
	150			CL6-24150
	160			CL6-24160
	170			CL6-24170
	180			CL6-24180
	190			CL6-24190
	200			CL6-24200
	30			120
130		CL6-30130		
140		CL6-30140		
150		CL6-30150		
160		CL6-30160		
170		CL6-30170		
180		CL6-30180		
190		CL6-30190		
200		CL6-30200		
32		140	M8	6
	150	CL6-32150		
	160	CL6-32160		
	170	CL6-32170		
	180	CL6-32180		
	190	CL6-32190		
	200	CL6-32200		
	210	CL6-32210		
	220	CL6-32220		
	38	140		
150		CL6-38150		
160		CL6-38160		
170		CL6-38170		
180		CL6-38180		
190		CL6-38190		
200		CL6-38200		
210		CL6-38210		
220		CL6-38220		

APLICAÇÃO : - Guias de placas e de conjunto extrator em moldes de injeção de termoplásticos.
 - Guias de moldes de estampo.

MATÉRIA PRIMA : Gaiola - Latão - Cu Zn 40.
 Esfera - 100 Cr 6 (DIN).
 Dureza da esfera : 62 - 67 HRC.
 Grau da esfera : G10.

VANTAGENS : - Redução da força de atrito.
 - Aumento da concentricidade.
 - Resistente a fadiga e desgaste.
 - Reduz o tempo de ciclo.
 - Melhora a velocidade de estampo.



L1=H+0,5C

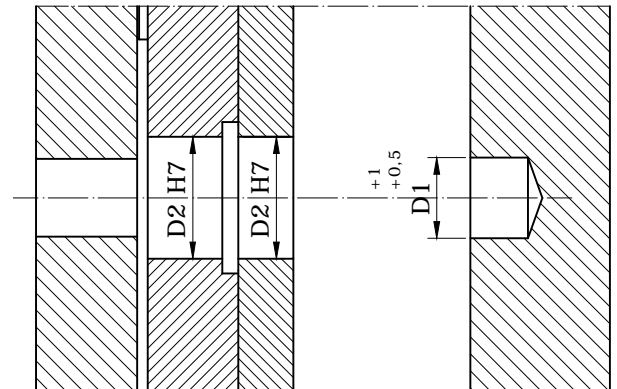
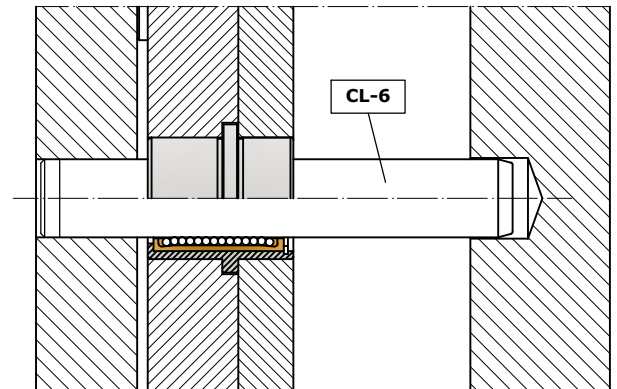
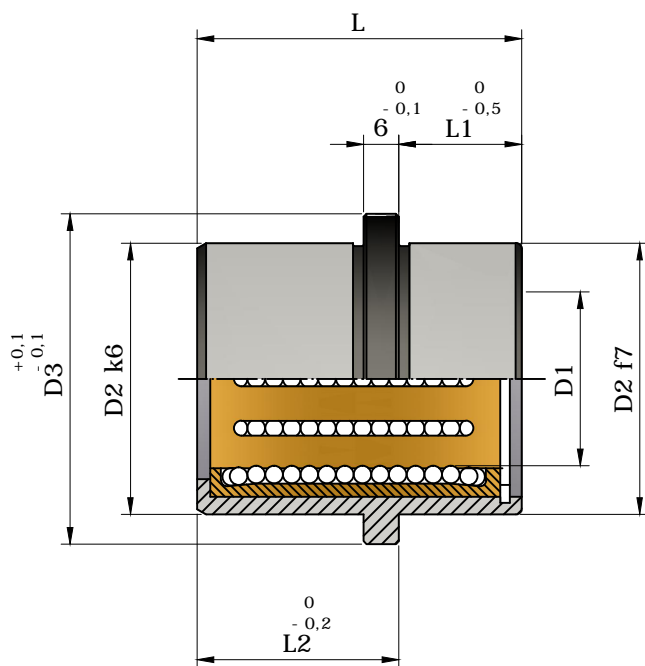
Fornecido com anel de retenção.

D1	D2	D3	L1	L2	L3	Ø e	CÓDIGO
16	22	20	40	1,5	1,2	3	GEL-16040
			50	1,5	1,2	3	GEL-16050
20	26	23,9	40	1,5	1,2	3	GEL-20040
			50	1,5	1,2	3	GEL-20050
			63	1,5	1,2	3	GEL-20063
			71	1,5	1,2	3	GEL-20071
24	30	26,9	63	2,0	1,5	3	GEL-24063
			71	2,0	1,5	3	GEL-24071
			80	2,0	1,5	3	GEL-24080
			95	2,0	1,5	3	GEL-24095
32	40	36	80	2,5	1,7	4	GEL-32080
			95	2,5	1,7	4	GEL-32095
			105	2,5	1,7	4	GEL-32105
			120	2,5	1,7	4	GEL-32120
			140	2,5	1,7	4	GEL-32140
38	46	42,5	95	2,5	1,7	4	GEL-38095
			106	2,5	1,7	4	GEL-38106
			120	2,5	1,7	4	GEL-38120
			140	2,5	1,7	4	GEL-38140

APLICAÇÃO : - Guias de placas e de conjunto extrator em moldes de injeção de termoplásticos.
 - Guias de moldes .
 - Temp. Max. : 180 °C.

MATÉRIA PRIMA : Bucha - Aço 1.3505, Temperado 62 HRC.
 Gaiola - Latão - Cu Zn 40.
 Esfera - 100 Cr 6 (DIN).
 Dureza da esfera : 62 - 67 HRC.
 Grau da esfera : G10.

VANTAGENS : - Redução da força de atrito.
 - Aumento da concentricidade.
 - Resistente a fadiga e desgaste.
 - Reduz o tempo de ciclo.
 - Melhora a velocidade de extração.



D1	D2	D3	L	L1	L2	CÓDIGO
12	22	26	26	6	20	BER-1226
18	30	35	35	11	24	BER-1835
24	38	43	45	16	29	BER-2445
30	46	52	55	21	34	BER-3055

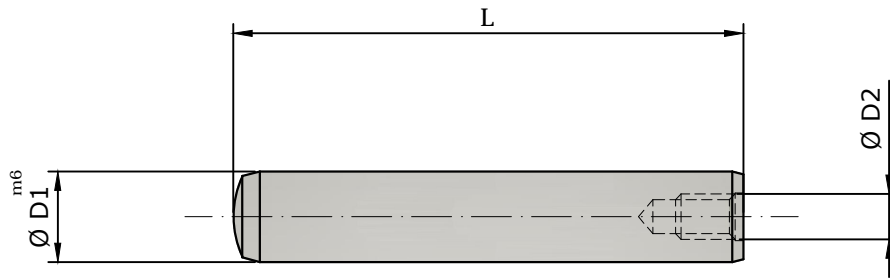
APLICAÇÃO : Para guia e garantia de posicionamento de peças no molde.

MATÉRIA PRIMA : SAE 1045

DUREZA : 58 à 62 HRC.

TRATAMENTO TERMICO : Temperado e revenido.

DIN 7979 forma "D"



Ø D1	6	8	10	12	16	20
Ø D2	M4	M5	M6	M6	M8	M10
L	CÓDIGO					
16	PNG-0616	-	-	-	-	-
20	PNG-0620	PNG-0820	-	-	-	-
24	PNG-0624	PNG-0824	PNG-1024	-	-	-
30	PNG-0630	PNG-0830	PNG-1030	PNG-1230	-	-
36	PNG-0636	PNG-0836	PNG-1036	PNG-1236	-	-
40	PNG-0640	PNG-0840	PNG-1040	PNG-1240	PNG-1640	-
45	PNG-0645	PNG-0845	PNG-1045	PNG-1245	PNG-1645	-
50	PNG-0650	PNG-0850	PNG-1050	PNG-1250	PNG-1650	PNG-2050
55	PNG-0655	PNG-0855	PNG-1055	PNG-1255	PNG-1655	PNG-2055
60	PNG-0660	PNG-0860	PNG-1060	PNG-1260	PNG-1660	PNG-2060
70	-	PNG-0870	PNG-1070	PNG-1270	PNG-1670	PNG-2070
80	-	PNG-0880	PNG-1080	PNG-1280	PNG-1680	PNG-2080
90	-	-	PNG-1090	PNG-1290	PNG-1690	PNG-2090
100	-	-	-	PNG-1210	PNG-1610	PNG-2010
120	-	-	-	PNG-1212	PNG-1612	PNG-2012
140	-	-	-	-	-	PNG-2014